



*QUALITY LABORATORY FURNITURE,
FUME HOODS AND WORK SURFACES*

Over 30 years of experience working for you

Provincial Lab Systems

Index

The Provincial Lab Systems' story.....	1
Provincial Lab Systems Quality Construction & Materials	2
Bench Systems	3
Bench Type Configurations	4
Base Cabinets	5-8
Knee Spaces, Gables and Fillers	9
Wall Cabinets	10, 11
Tall Storage Cabinets	12-14
Tables	15, 16
Shelving	17
Pipe Chases and Drawer Slides	18
Hardware	19, 20
Wood and Laminate Options Menus	21-24
Freestanding Flammable and Acid Storage Cabinets	25
Work Surfaces	26
Sinks.....	27
Service Fixtures	28-35
Fume Hoods	36-44
Laboratory Accessories	45-46

Provincial Lab Systems Limited reserves the right to change construction methods, materials, and products without notice.

The Provincial Lab Systems' Story *Over 30 years of experience working for you*



Your single source solution for all of your laboratory furniture needs

Provincial Lab Systems Limited is a single source supplier of quality laboratory furniture and institutional casework. The wood furniture is manufactured at our new facility located in the Burnside Industrial Park, Dartmouth, Nova Scotia.

What is said about Provincial Lab Systems

I just wanted to take a moment to thank Provincial Lab Systems for their tremendous work on the Hallmark Dental Laboratory Fit-up.

David MacVicar/ Jetco Contracting Inc.

The project looks good and I'm excited about it. We have received many compliments all the way up from the "plant manager".

Jamie Richards/ Michelin North America (Canada) Inc.

FSC® Certified:

- Provincial Lab Systems Limited is certified for Forest Stewardship Council® Chain-of-Custody standards promoting the responsible management of the world's forests.
- We are able to offer FSC® Certified and formaldehyde free materials that comply with the U.S. Green Building Council's LEED standards and are eligible for LEED credits.

Products:

- Wood, laminate, metal and stainless steel casework
- Systems furniture and adjustable height tables
- Laminate, phenolic, stainless steel and epoxy countertops
- Fume hoods
- Service fixtures, electrical raceways, safety showers/ eyewashes
- Exhaust Arms

Market segments are:

- High Schools, Colleges & Universities
- Pharmaceutical
- Hospitals and Dental Labs
- Industrial
- Contract Furniture

Consultation and Design Services:

- We can offer consultation and design services that are not currently available at other institutional casework and millwork manufacturers.
- This simplifies the construction process for our clients and therefore provides an efficient single source solution for all your laboratory furniture needs.



Our goal is to meet and exceed our customer's quality and on time delivery expectations, making **PROVINCIAL LAB SYSTEMS LIMITED** a preferred supplier by both clients and the architectural community.

Provincial Lab Systems Limited

THE PROVINCIAL LAB SYSTEMS' STORY

Quality Construction:

State-of-the-art machinery is used in the manufacturing process to ensure that our quality meets and exceeds AWMAC/AWI/WI and SEFA standards.

- The CNC provides increased cutting and machining capabilities due to its speed, accuracy, and repeatability.
- The boring and dowel inserter machine helps produce quality and accurate multiple dowel and glue joint connections.
- The case clamp greatly improves the accuracy of the assembly process and as important, increases productivity .

Critical Lead Times:

We offer exceptional turn around times that separate ourselves from the larger manufacturers.

Quality Wood Cabinet Materials and Hardware:

In today's demanding laboratory environments, there are a number of quality cabinet materials and hardware than can be offered by *Provincial Lab Systems*.

- Veneers: Grade A Plain sliced, rotary, and quarter cut veneers on all exterior surfaces (Note: we use same species on the interior of the cabinets)
- Melamines: Tough impregnated resin surfaces
- Laminates: Plastic laminates in post forming, horizontal and vertical grade thicknesses, regular and chemical resistant finishes
- Cores: Particle core, MDF, veneer, NAUF, FSC, marine grade
- Drawers: Baltic birch or melamine w/ captured white hardboard drawer bottoms
- Drawer slides: 3/4 extension and full extension, manual and self closing options
- Hinges: Concealed, and institutional 3 & 5 knuckle
- Finish: Clear high performance chemical resistant System 7 catalyzed vinyl finish (Stain finishes also available)

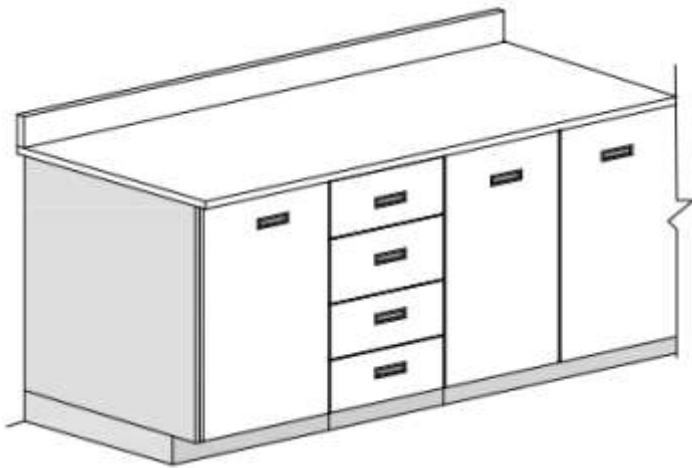
Customization:

All of our standard wood products can be customized to suit your particular needs at a nominal cost without affecting lead times.

Quality Metal Casework:

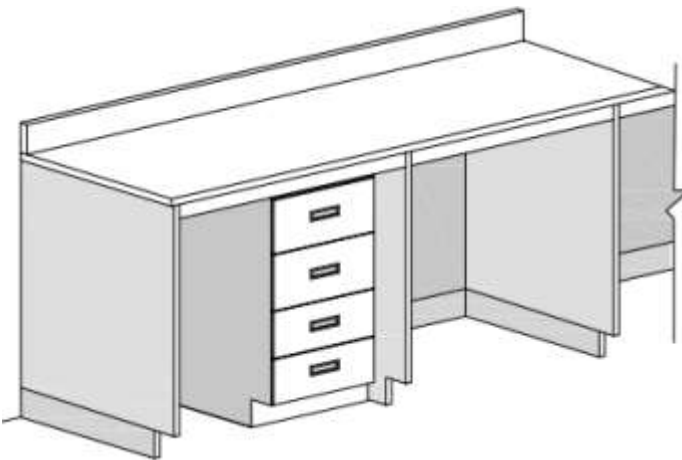
At *Provincial Lab Systems*, not only can we offer quality wood and laminate casework, we offer painted metal, and stainless steel casework, all meeting SEFA standards. Our painted metal cabinets can be finished to the exact colour of all fume hood product line.





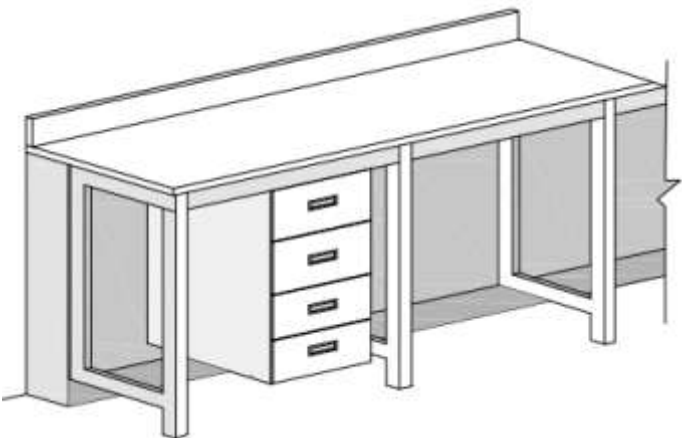
FixedPro Laboratory System

FixedPro laboratory system is the most traditional and most cost effective system used in laboratories currently. Floor mounted cabinetry provides the support for the counter surface, allowing for maximum storage and superior weight capacity. Modularity of this system ensures that future expansion or renovation will pose little problem for the end user.



FlexPro Laboratory System

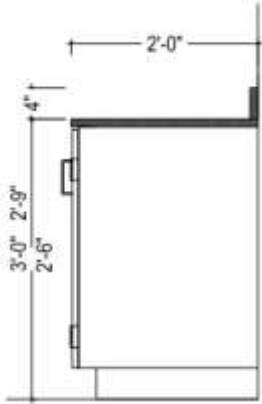
FlexPro laboratory system allow the cabinets to slide under the counter surface, offering the end user the greatest amount of flexibility. Counter surfaces are supported by a back panel and gable system, maximizing the selection of cabinets available to the end user. The *FlexPro* system can easily be added to or modified with minimal cost and with virtually no installation costs.



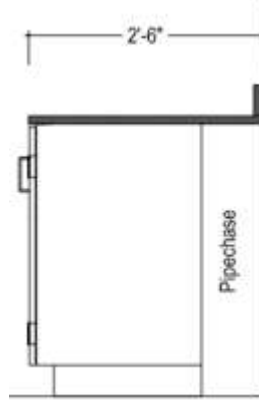
LiftPro Laboratory System

LiftPro laboratory system similar to the *FlexPro* system supports the counter surface on back panels and metal leg supports. *LiftPro* cabinets are suspended from the floor, and offers the most flexibility to the user who requires the ease of complete reconfiguration. *LiftPro* systems allows the easy removal of leg frames and cabinets to be repositioned as the end user requires.

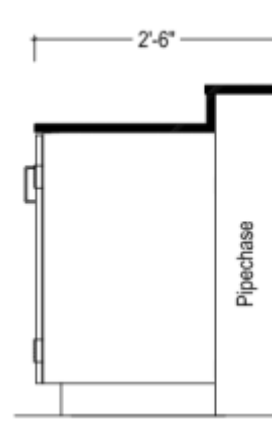
Bench Type Configurations



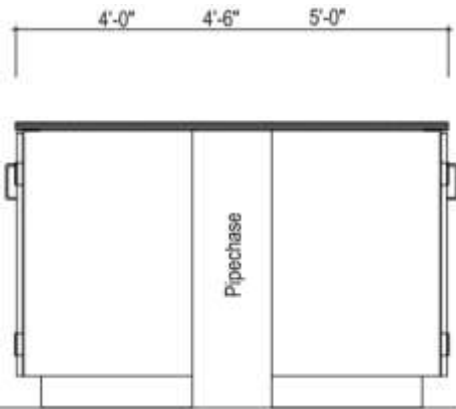
BENCH TYPE 1



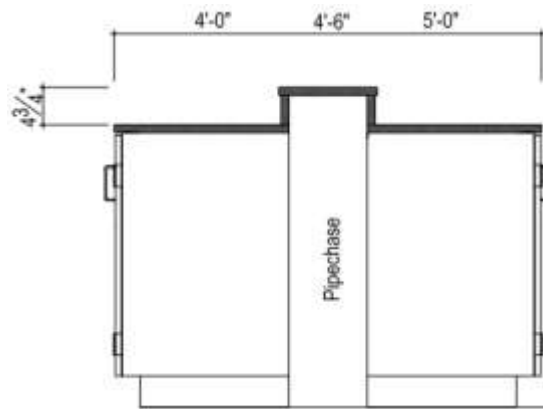
BENCH TYPE 2



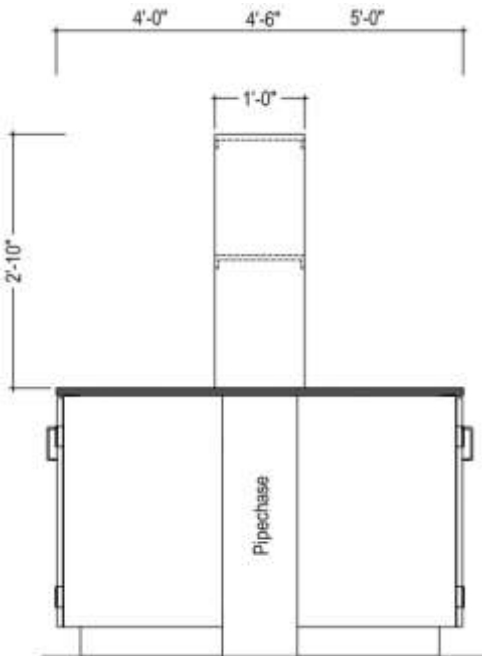
BENCH TYPE 3



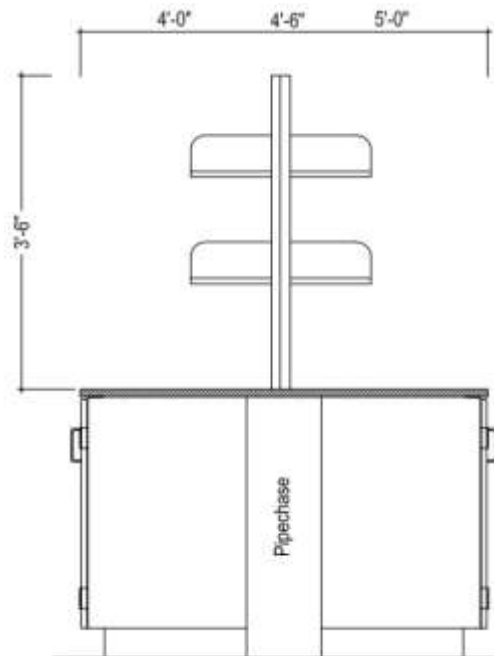
BENCH TYPE 4



BENCH TYPE 5



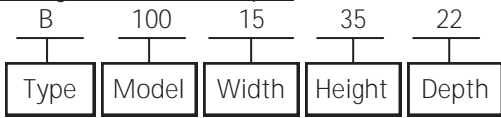
BENCH TYPE 6



BENCH TYPE 7

BENCH TYPE CONFIGURATIONS

Coding Reference Example:



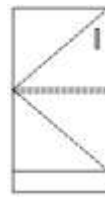
Base Cabinet Coding Standards:

Type: B
 Model: Product Model Number
 Width: As Noted
 Height: 35" (STD), 32" (ADA)
 Depths: 22"(STD), 21"(STD -open units)
 Shelves: As Shown

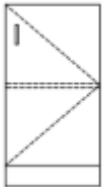
Base Cabinets- Standing Height



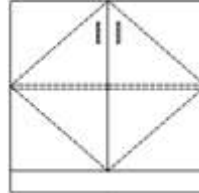
B	100	15	--	21
		18	--	21
		21	--	21
		24	--	21
		30	--	21
		36	--	21
		42	--	21
		48	--	21



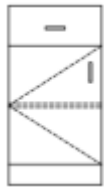
B	101	15	--	22
		18	--	22
		21	--	22
		24	--	22



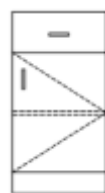
B	102	15	--	22
		18	--	22
		21	--	22
		24	--	22



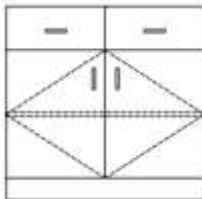
B	103	30	--	22
		36	--	22
		42	--	22
		48	--	22



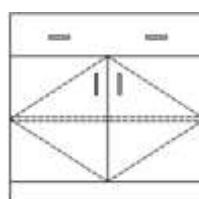
B	104	15	--	22
		18	--	22
		21	--	22
		24	--	22



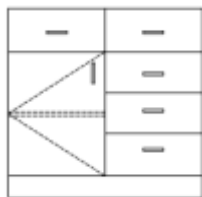
B	105	15	--	22
		18	--	22
		21	--	22
		24	--	22



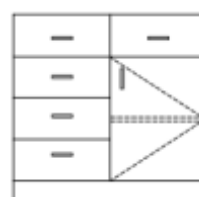
B	106	30	--	22
		36	--	22
		42	--	22
		48	--	22



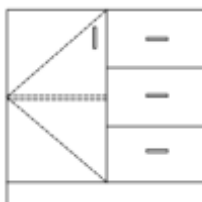
B	107	30	--	22
		36	--	22
		42	--	22
		48	--	22



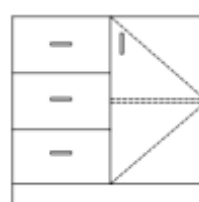
B	108	30	--	22
		36	--	22
		42	--	22
		48	--	22



B	109	30	--	22
		36	--	22
		42	--	22
		48	--	22

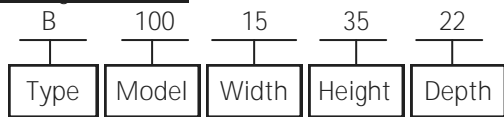


B	110	30	--	22
		36	--	22
		42	--	22
		48	--	22



B	111	30	--	22
		36	--	22
		42	--	22
		48	--	22

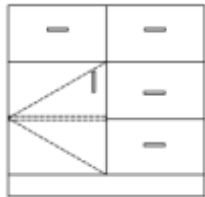
Coding Reference



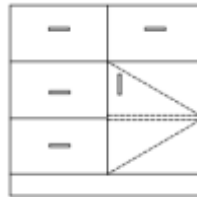
Base Cabinet Coding Standards:

Type: B
 Model: Product Model Number
 Width: As Noted
 Height: 35" (STD), 32" (ADA)
 Depths: 22"(STD), 21"(STD -open units)
 Shelves: As Shown

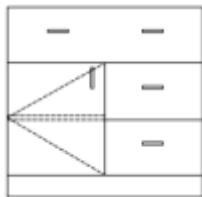
Base Cabinets - Standing Height



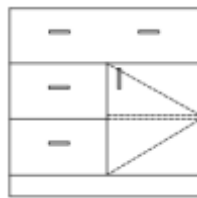
B 112 30 -- 22
 36 -- 22
 42 -- 22
 48 -- 22



B 113 30 -- 22
 36 -- 22
 42 -- 22
 48 -- 22



B 114 30 -- 22
 36 -- 22
 42 -- 22
 48 -- 22



B 115 30 -- 22
 36 -- 22
 42 -- 22
 48 -- 22



B 116 15 -- 22
 18 -- 22
 21 -- 22
 24 -- 22



B 117 30 -- 22
 36 -- 22
 42 -- 22
 48 -- 22



B 118 30 -- 22
 36 -- 22
 42 -- 22
 48 -- 22



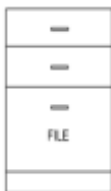
B 119 30 -- 22
 36 -- 22
 42 -- 22
 48 -- 22



B 120 15 -- 22
 18 -- 22
 21 -- 22
 24 -- 22



B 121 18 -- 22
 21 -- 22
 24 -- 22



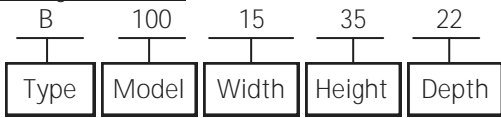
B 122 18 -- 22
 21 -- 22
 24 -- 22



B 123 36 -- 22
 42 -- 22
 48 -- 22

BASE CABINETS - Standing Height

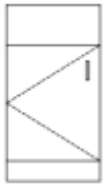
Coding Reference



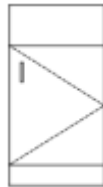
Base Cabinet Coding Standards:

Type: B
 Model: Product Model Number
 Width: As Noted
 Height: 35" (STD), 32" (ADA)
 Depths: 22"(STD), 21"(STD -open units)
 Shelves: As Shown

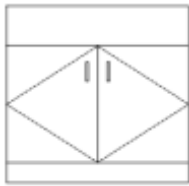
Sink Base Cabinets- Standing Height



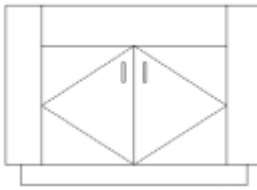
B	124	15	22
		18	22
		21	22
		24	22



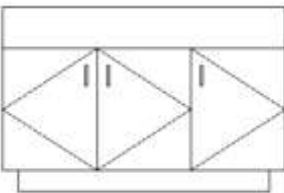
B	125	15	35	22
		18	35	22
		21	35	22
		24	35	22



B	126	30	22
		36	22
		42	22
		48	22

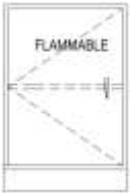


B	127	46	22
		52	22
		58	22



B	128	46	22
		52	22
		58	22

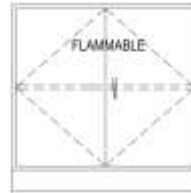
Metal Under Counter Flammable / Acid Storage Cabinets



FMC24L
 Flammable Storage Cabinet
 Single door left hand hinged
 (24" w x 35" h x 18" d)



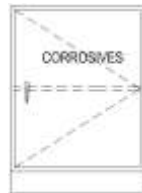
FMC24R
 Flammable Storage Cabinet
 Single door right hand hinged
 (24" w x 35" h x 18" d)



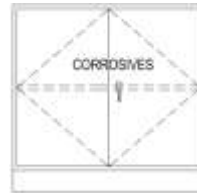
FMC35
 Flammable Storage Cabinet
 Two door cabinet
 (36" w x 35" h x 18" d)
 (48" w x 35" h x 18" d)



SMA24L
 Acid Storage Cabinet
 Single door left hand hinged
 (24" w x 35" h x 18" d)



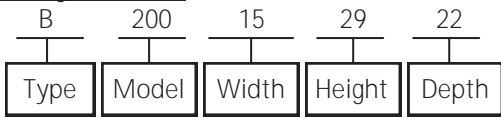
SMA24R
 Acid Storage Cabinet
 Single door right hand hinged
 (24" w x 35" h x 18" d)



SMA24L
 Acid Storage Cabinet
 Single door left hand hinged
 (36" w x 35" h x 18" d)
 (48" w x 35" h x 18" d)

BASE CABINETS - Standing Height

Coding Reference



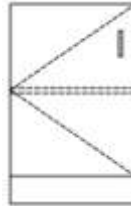
Base Cabinet Coding Standards:

Type: B
 Model: Product Model Number
 Width: As Noted
 Height: 29" (STD),
 Depths: 22"(STD), 21"(STD -open units)
 Shelves: As Shown

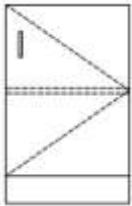
Base Cabinets- Sitting Height



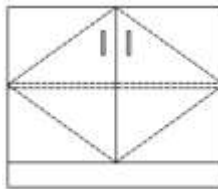
B 200 15 29 21
 18 29 21
 21 29 21
 24 29 21
 30 29 21
 36 29 21
 42 29 21
 48 29 21



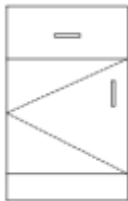
B 201 15 29 22
 18 29 22
 21 29 22
 24 29 22



B 202 15 29 22
 18 29 22
 21 29 22
 24 29 22



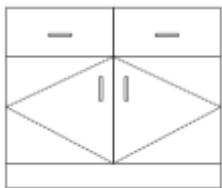
B 203 30 29 22
 36 29 22
 42 29 22
 48 29 22



B 204 15 29 22
 18 29 22
 21 29 22
 24 29 22



B 205 15 29 22
 18 29 22
 21 29 22
 24 29 22



B 206 30 29 22
 36 29 22
 42 29 22
 48 29 22



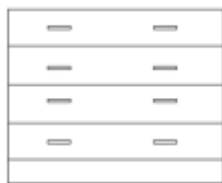
B 207 15 29 22
 18 29 22
 21 29 22
 24 29 22



B 208 30 29 22
 36 29 22
 42 29 22
 48 29 22



B 209 30 29 22
 36 29 22
 42 29 22
 48 29 22



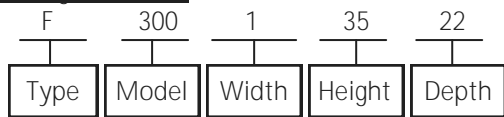
B 210 30 29 22
 36 29 22
 42 29 22
 48 29 22



B 211 18 29 22
 21 29 22
 24 29 22

BASE CABINETS - Sitting Height















Coding Reference



Knee Space Coding Standards:

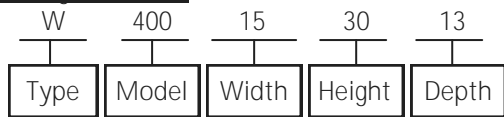
Type: K,G, F
 Model: Product Model Number
 Width: As Noted
 Height: 35" (STD), 32" (ADA), 29" (Low Ht), 84"H
 Depths: 22"(STD), 21"(STD -open units)
 Wall Heights: 12" ,15" ,18" ,21" ,24" ,30" ,36" ,48"

Knee Spaces, Gables and Fillers

	K 300	24	--	21		K 301	24	--	22		K 302	36	--	22		
		30	--	21			30	--	22			42	--	22		
		36	--	21								48	--	22		
		42	--	21												
		48	--	21												
		60	--	21				K 303	24			--	21		K 304	36
72	--	21	30	--	21	42				--	21					
												48	--	21		
	G 700	22	--	.75		G 701	22	--	.75		G 702	46	--	.75		
		23	--	.75			23	--	.75			52	--	.75		
		29	--	.75			29	--	.75			58	--	.75		
		35	--	.75			35	--	.75							
GABLE				NOTCHED GABLE					ISLAND GABLE							
	F 800	1	--			F 801	0-12	--			F 802	15	--	.75		
		6	--				12-24	--				18	--	.75		
		12	--									21	--	.75		
		48	--									24	--	.75		
BASE/TALL FRONT FILLER				BASE/TALL END FILLER					BASE/TALL/WALL FINISHED BACK PANEL				30	--	.75	
														36	--	.75
														42	--	.75
														48	--	.75
	F 803	1	--			F 804	1	--			F 805	1	--			
		2	--				2	--				2	--			
		6	--				6	--				6	--			
		12	--				12	--				12	--			
BASE /TALL CORNER FILLER				WALL FRONT FILLER					WALL CORNER FILLER							

KNEE SPACES, GABLES AND FILLERS

Coding Reference



Wall Cabinet Coding Standards:

Type: W
 Model: Product Model Number
 Width: As Noted
 Height: 12" 15", 18", 21", 24", 30", 36", 48"
 Depths: 13", 16" (STD), 12", 15" (STD- Open units and sliding doors)
 Shelves: 12" (0), 15"(0), 18" (0), 24" (1), 30" (2), 36" (2), 48" (3)

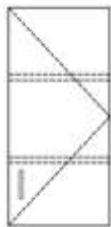
Wall Cabinets



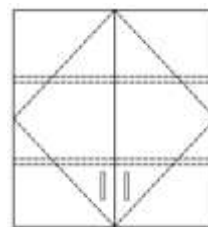
W 400 15 --- ---
 18 --- ---
 21 --- ---
 24 --- ---
 30 --- ---
 36 --- ---
 42 --- ---
 48 --- ---



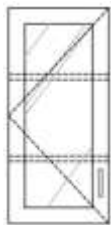
W 401 15 --- ---
 18 --- ---
 21 --- ---
 24 --- ---



W 402 15 --- ---
 18 --- ---
 21 --- ---
 24 --- ---



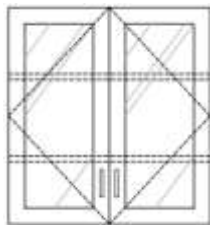
W 403 30 --- ---
 36 --- ---
 42 --- ---
 48 --- ---



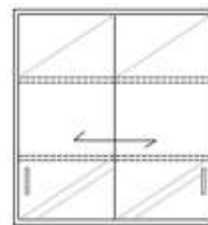
W 404 15 --- ---
 18 --- ---
 21 --- ---
 24 --- ---



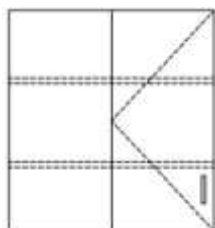
W 405 15 --- ---
 18 --- ---
 21 --- ---
 24 --- ---



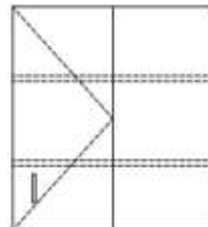
W 406 30 --- ---
 36 --- ---
 42 --- ---
 48 --- ---



W 407 30 --- ---
 36 --- ---
 42 --- ---
 48 --- ---



W 408 30 --- ---
 36 --- ---
 42 --- ---
 48 --- ---

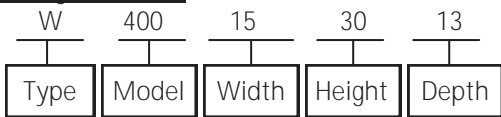


W 409 30 --- ---
 36 --- ---
 42 --- ---
 48 --- ---

BLIND CORNER CABINET

BLIND CORNER CABINET

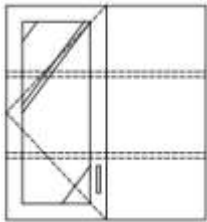
Coding Reference



Wall Cabinet Coding Standards:

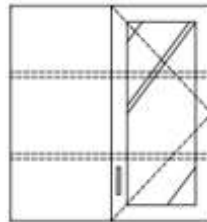
Type: W
 Model: Product Model Number
 Width: As Noted
 Height: 12", 15", 18", 21", 24", 30", 36", 48"
 Depths: 13", 16" (STD), 12", 15" (STD- Open units and sliding doors)
 Shelves: 12" (0), 15" (0), 18" (0), 24" (1), 30" (2), 36" (2), 48" (3)

Wall Cabinets



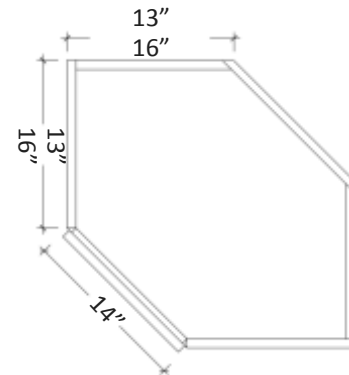
W 410	30	---	---
	36	---	---
	42	---	---
	48	---	---

BLIND CORNER CABINET

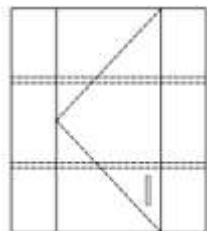


W 411	30	---	---
	36	---	---
	42	---	---
	48	---	---

BLIND CORNER CABINET

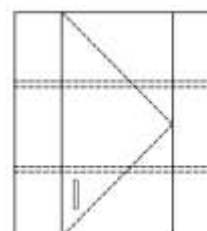


PLAN VIEW OF CORNER CABINETS



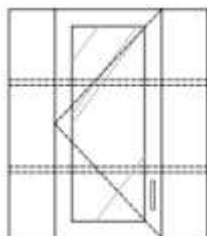
W 412	30	---	---
	36	---	---
	42	---	---
	48	---	---

SOLID DOOR CORNER CABINET



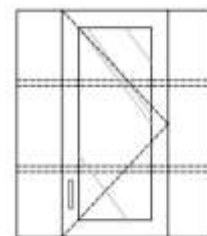
W 413	30	---	---
	36	---	---
	42	---	---
	48	---	---

SOLID DOOR CORNER CABINET



W 414	30	---	---
	36	---	---
	42	---	---
	48	---	---

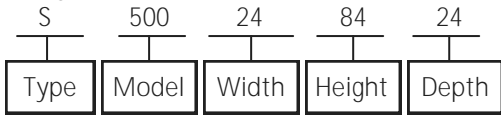
FRAMED GLASS CORNER CABINET



W 415	30	---	---
	36	---	---
	42	---	---
	48	---	---

FRAMED GLASS CORNER CABINET

Coding Reference



Storage Cabinet Coding Standards:

Type: S
 Model: Product Model Number
 Width: As Noted
 Height: 84" (STD)
 Depths: 13", 16", 24" (STD) , 12", 15", 23" (STD- Open units)
 Shelves: As Shown

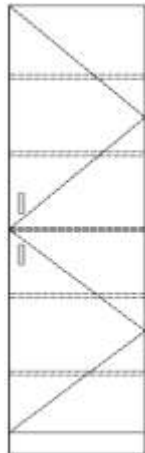
Tall Storage Cabinets



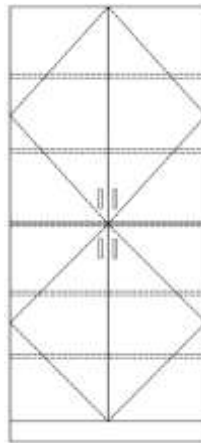
S 500 15 84 ---
 18 84 ---
 21 84 ---
 24 84 ---
 30 84 ---
 36 84 ---
 42 84 ---
 48 84 ---



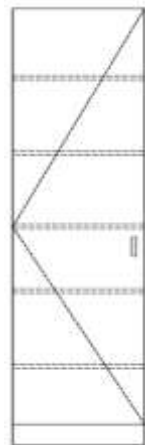
S 501 15 84 ---
 18 84 ---
 21 84 ---
 24 84 ---



S 502 15 84 ---
 18 84 ---
 21 84 ---
 24 84 ---



S 503 30 84 ---
 36 84 ---
 42 84 ---
 48 84 ---



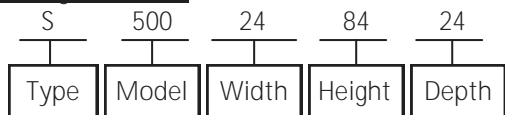
S 504 15 84 ---
 18 84 ---
 21 84 ---
 24 84 ---



S 505 15 84 ---
 18 84 ---
 21 84 ---
 24 84 ---

TALL STORAGE CABINETS

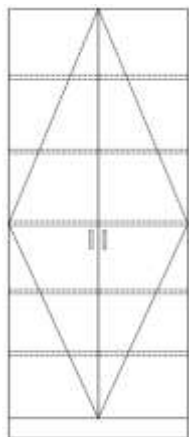
Coding Reference



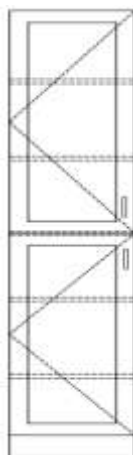
Storage Coding Standards:

Type: S
 Model: Product Model Number
 Width: As Noted
 Height: 84" (STD)
 Depths: 13", 16", 24" (STD) , 12", 15", 23" (STD- Open units)
 Shelves: As Shown

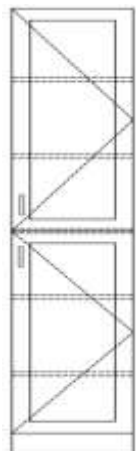
Tall Storage Cabinets



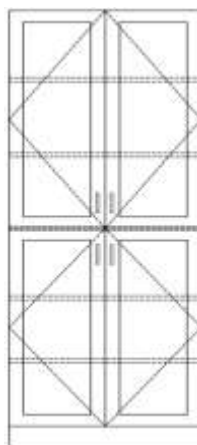
S 506 30 84 ---
 36 84 ---
 42 84 ---
 48 84 ---



S 507 15 84 ---
 18 84 ---
 21 84 ---
 24 84 ---



S 508 15 84 ---
 18 84 ---
 21 84 ---
 24 84 ---



S 509 30 84 ---
 36 84 ---
 42 84 ---
 48 84 ---



S 510 36 84 23
 42 84 23
 48 84 23



S 511 36 84 24
 42 84 24
 48 84 24

BARRIER FREE SAFETY STATION

SAFETY CABINET

TALL STORAGE CABINETS

Coding Reference

S	500	24	84	24
Type	Model	Width	Height	Depth

Storage Coding Standards:

Type: S
 Model: Product Model Number
 Width: As Noted
 Height: 84"
 Depths: 24" (STD)
 Shelves: As Shown

Tall Storage Cabinets



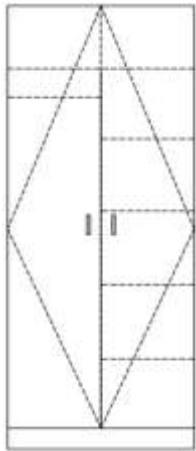
S	512	15	84	24
		18	84	24
		21	84	24
		24	84	24

CLOSET WITH COAT ROD



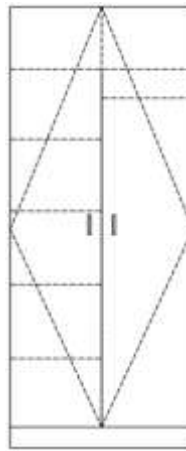
S	513	15	84	24
		18	84	24
		21	84	24
		24	84	24

CLOSET WITH COAT ROD



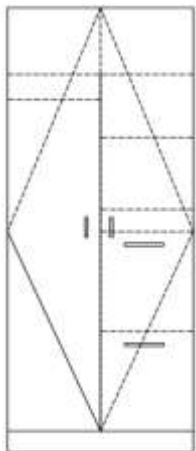
S	514	30	84	24
		36	84	24
		42	84	24
		48	84	24

CLOSET WITH COAT ROD AND SHELVES



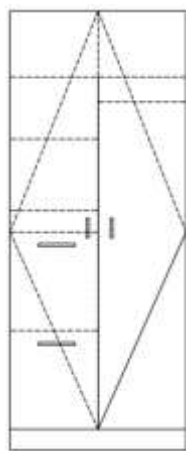
S	515	30	84	24
		36	84	24
		42	84	24
		48	84	24

CLOSET WITH COAT ROD AND SHELVES



S	516	30	84	24
		36	84	24
		42	84	24
		48	84	24

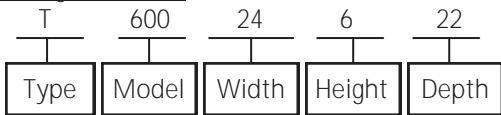
CLOSET WITH COAT ROD & DRAWERS



S	517	30	84	24
		36	84	24
		42	84	24
		48	84	24

CLOSET WITH COAT ROD & DRAWERS

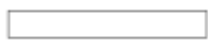
Coding Reference



Tables Coding Standards:

Type: T
 Model: Product Model Number
 Width: As Noted
 Height: 35" (STD), 32" (ADA), 29" (Low Ht)
 Depths: 22"(STD), 28"
 Solid wood legs come with levelers and black vinyl leg shoes.

Tables



T	600	24	5	--
			30	5 --
			36	5 --
			42	5 --
			48	5 --
			60	5 --



T	601	24	5	--
			30	5 --



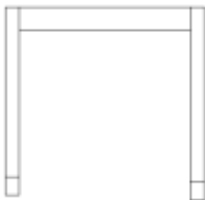
T	602	36	5	--
			42	5 --
			48	5 --



T	603	24	6	--
			30	6 --



T	604	36	6	--
			42	6 --
			48	6 --



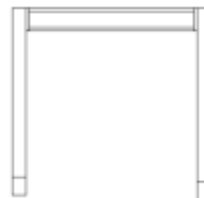
T	605	22	--	--
			28	-- --
			34	-- --
			40	-- --
			46	-- --



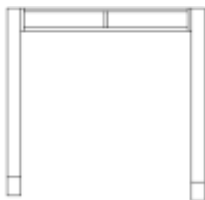
T	606	22	--	--
			28	-- --



T	607	34	--	--
			40	-- --
			46	-- --




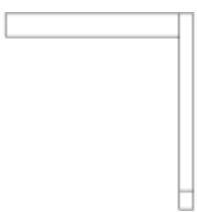
T	608	22	--	--
			28	-- --



T	609	34	--	--
			40	-- --
			46	-- --



<u>Coding Reference</u>					<u>Tables Coding Standards:</u>				
T	600	24	6	22	Type: T				
					Model: Product Model Number				
Type	Model	Width	Height	Depth	Width: As Noted				
					Height: 35" (STD), 32" (ADA), 29" (Low Ht)				
					Depths: 22" (STD), 28"				
Solid wood legs come with levelers and black vinyl leg shoes.									


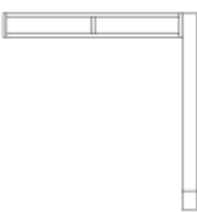
Tables

	T 610	22	--	--		T 611	22	--	--
		28	--	--			28	--	--
		34	--	--			34	--	--
		40	--	--			40	--	--
		46	--	--			46	--	--

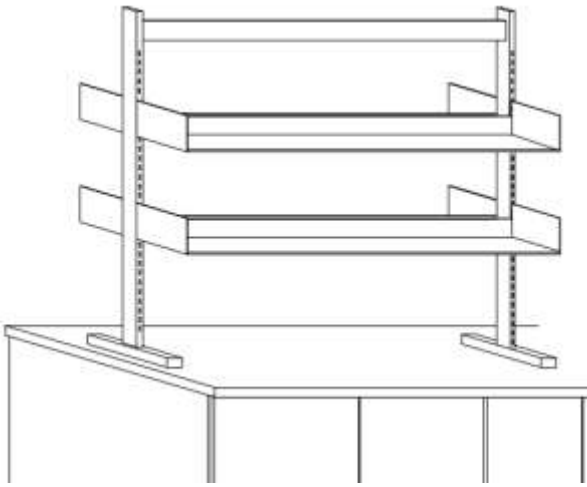
	T 612	22	--	--		T 613	22	--	--
		28	--	--			28	--	--

	T 614	34	--	--		T 615	34	--	--
		40	--	--			40	--	--
		46	--	--			46	--	--

	T 616	22	--	--		T 617	22	--	--
		28	--	--			28	--	--

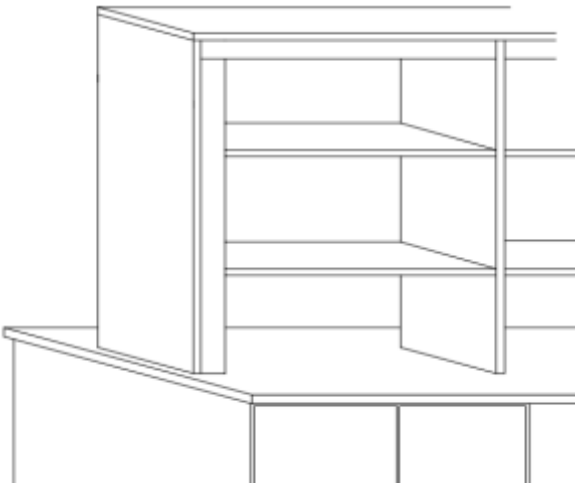
	T 618	34	--	--		T 619	34	--	--
		40	--	--			40	--	--
		46	--	--			46	--	--

Typical Shelving Units



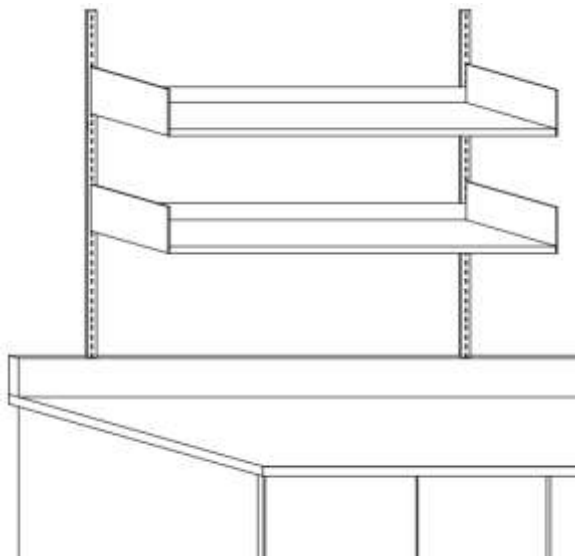
ADJUSTABLE ISLAND SHELVING

Metal uprights and shelf brackets with wood or laminate shelves.



FIXED REAGENT SHELVING AND END PIPE CHASE

Wood or laminate uprights or shelves.



ADJUSTABLE WALL SHELVING WITH BRACKETS

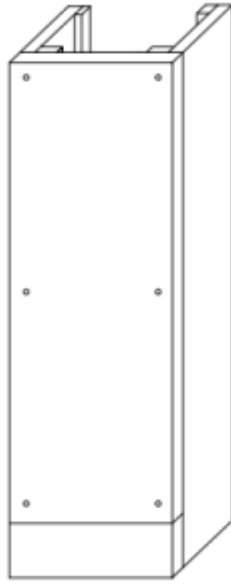
Metal shelf standards and shelf brackets with wood or laminate shelves

For complete sizes and product offerings contact Provincial Lab Systems.

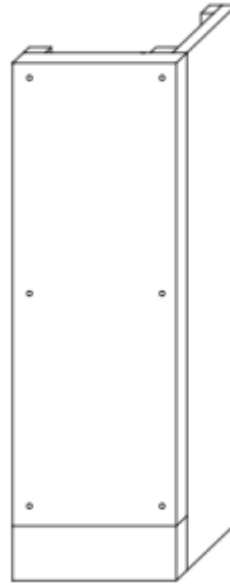
Pipe Chases



WALL TYPE - 1 SIDED



WALL TYPE- 3 SIDED



CORNER TYPE



ISLAND TYPE

Pipe chases can be made in wood or laminate with removable panels to allow access to services. Circumstances requiring pipe chases vary in dimensional requirements so pipe chase are all custom made to accommodate specific project requirements.

Drawer Slides



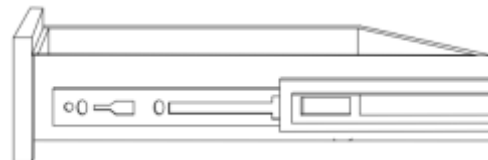
Code: HDS001M
Metabox Drawer Slides
Finish: Painted Metal
Colour: Cream



Code: HDS002F
MetaFile Drawer System
Finish: Painted Metal
Colour: Cream



Code: HDS003U
Bottom mount drawer slide
Extension: Full or 3/4
Finish: Painted Metal
Colour: Cream



Code: HDS004S
Accuride drawer slide
Extension: 3/4" or Full
Finish: Zinc

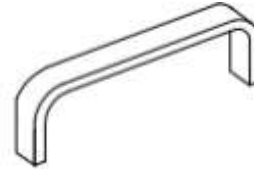
Pulls



Code: HD001
96mm D-Pull
Finish: Satin Chrome, Black or
Stainless Steel

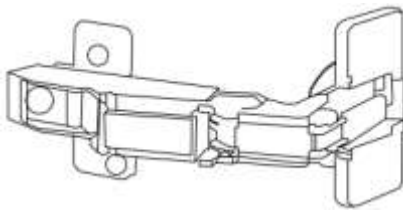


Code: HD002
Flush Mounted Pull
Finish: Black or Chrome

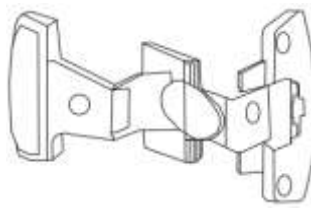


Code: HD003
Bar Pull
Finish: Satin Chrome, Black or
Stainless Steel

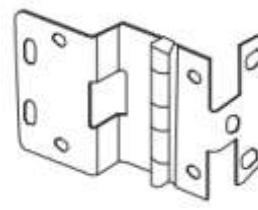
Hinges



Code: HGB110
Blum 110 degree concealed hinge
Finish: Nickel

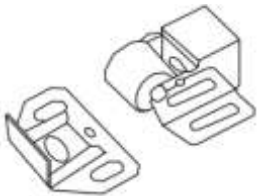


Code: HGH003
Institutional 3 Knuckle Hinge
Finish: Nickel

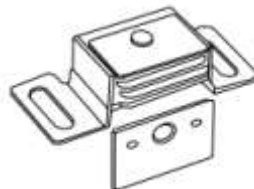


Code: HGR005
Institutional 5 Knuckle Hinge
Finish: Satin Chrome, Stainless
Steel and Black

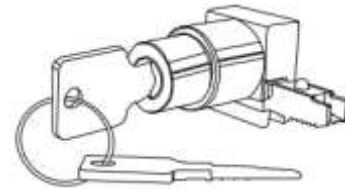
Catches and Locks



Code: HD004
Roller Catch



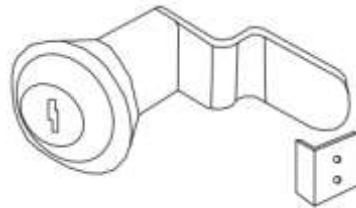
Code: HD005
Magnetic Catch and Plate



Code: HD006
Sliding Glass Door Locks



Code: HD007
Elbow Catch



Code: HD008
Cam lock with Striker Plate

*only required with pairs
of locking doors

Shelf Supports, Brackets and Standards



Code: HD010
Metal Shelf Support
Finish: Nickel



Code: HD013
Metal Shelf Standard
Finish: Zinc



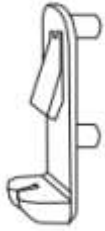
Code: HD012
Metal Shelf Clip
Finish: Zinc



Code: HD015
Heavy Duty Metal Shelf Standard
Finish: Zinc

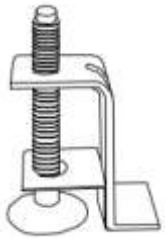


Code: HD014
Metal Shelf Brackets
Finish: Zinc



Code: HD011
Plastic Seismic Locking
Shelf Clip
Finish: Clear

Cabinets Supports and Accessories



Code: HD016
Cabinet Leveler
Finish: Zinc



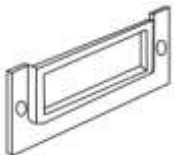
Code: HD017
Caster, Rubber Wheel
Finish: Zinc
Available: Swivel (SW) or Fixed (FX)



Code: HD018
Lockable Caster, Rubber Wheel
Finish: Zinc
Available : Swivel (SW) or Fixed (FX)



Code: HD022
CPU Holder
Finish: Black



Code: HD019
Label Holder
Finish: Anochrome



Code: HD020
Number Plate
Finish: Aluminum



Code: HD021
Grommet
Finish: Black

Wood Casework Options Menu



Cabinet construction

- Standard*- Doweled
- Standard*- Frameless and full overlay
- Optional*- Intermediate rails
- Optional*- Lipped door construction w/ top frame

Cabinet materials

- Standard*- regular
- Optional*- NAUF
- Optional*- FSC Certified

Cabinet veneer species and cut

- Standard*- birch- rotary cut (Cabinet fronts and cabinet body B/2)
- Optional*- red oak- plain sliced (Cabinet fronts AA/1 and cabinet body A/1)
- Optional*- maple- plain sliced (Cabinet fronts AA/1 and cabinet body A/1)
- Other*- specify _____

Cabinet body substrate- Door and drawer front substrate is always particle core to avoid warping

- Standard*- particle core
- Optional*- veneer core
- Optional*- MDF core
- Other*- specify _____

Cabinet base

- Standard*- unfinished separate veneer core ply
- Optional*- finished same as cabinet body

Wood finish- laboratory grade

- Standard*- clear
- Optional*- choice of 4 standard stains
- Optional*- stain to match customer sample

Door and drawer front grain direction

- Standard*- combination grain (horizontal on drawer fronts and vertical on doors)
- Optional*- vertical matched with both vertical on drawers and doors

Wood edgbanding

- Standard*- 3mm solid on cabinet fronts, and veneer on cabinet body and shelves
- Optional*- 3mm solid on cabinet fronts, and all cabinet body members and shelves

Drawer slide systems

- Standard*- Blum Metabox integral metal drawers slides
- Optional*- Blum 230M ¾ extension epoxy coated- bottom mount
- Optional*- Blum 430E full extension epoxy coated- bottom mount
- Optional*- Accuride 3832 full extension zinc
- Other*- specify _____

Wood Casework Options Menu

Drawer box construction

- Standard*- white melamine back/ bottom (Blum Metabox metal sides)
- Optional- doweled white melamine/ white hardboard bottom
- Optional- baltic birch/ white hardboard bottom

Type of pulls

- Standard*- 96mm wire- satin chrome
- Optional - 96mm wire- stainless steel
- Optional - flush metal black
- Other – specify_____

Types of hinges

- Standard*- Hettich grade 1 three knuckle- nickel
- Optional- Blum concealed 110° opening
- Optional- heavy duty 5 knuckle- satin chrome
- Optional- heavy duty 5 knuckle-stainless steel
- Other – specify_____

Types of catches (only required when 5 knuckle hinges being used)

- Standard*- roller catch
- Optional- magnetic catch

Types of shelf supports

- Standard*- steel pin type
- Optional- plastic locking seismic type
- Optional- surface mounted pilasters/ clips
- Optional- recessed mounted pilasters/ clips
- Other – specify_____

Locking requirements

- Standard*- none
- Optional- 5 disc cam lock- keyed alike (no security panels)
- Optional- 5 disc cam lock- keyed different with security panels
- Other – specify_____

Glass Doors

- Standard*- laminated safety
- Optional- tempered glass

Cabinet Levelers

- Standard*- none
- Optional- required

Accessories

- Standard*- none
- Label holders- anochrome
- Number plates (shipped loose for field installation)

Laminate Casework Options Menu

Cabinet construction

- Standard*- Doweled
- Standard*- Frameless and full overlay
- Optional*- Intermediate rails



Cabinet materials

- Standard*- regular
- Optional*- NAUF
- Optional*- FSC Certified

Cabinet body/ knee spaces/ open cabinets

- Standard*- Thermally Fused Melamine (TFM)
- Optional*- Regular High Pressure Laminate (HPL) on exposed ends areas
- Optional*- Chemical resistant High Pressure Laminate (HPL) on exposed areas only

Cabinet door and drawer fronts

- Standard*- Thermally Fused Melamine (TFM)
- Optional*- Regular High Pressure Laminate (HPL)
- Optional*- Chemical resistant High Pressure Laminate (HPL)

Cabinet body substrate- Door and drawer front substrate is always particle core to avoid warping

- Standard*- particle core
- Optional*- MDF core
- Other*- specify_____

Cabinet base

- Standard*- unfinished separate veneer core ply
- Optional*- finished same as cabinet body

Door and drawer front grain direction (when applicable)

- Standard*- combination grain (horizontal on drawer fronts and vertical on doors)
- Optional*- vertical matched with both vertical on drawers and doors

Cabinet edgbanding

- Standard*- 3mm pvc on cabinet fronts, and .5mm on cabinet body and shelves
- Optional*- 3mm pvc on cabinet fronts, and all cabinet body members and shelves
- Optional*- self edge laminate on cabinet body, door and drawer fronts

Drawer box construction

- Standard*- white melamine back/ bottom (Blum Metabox metal sides)
- Optional*- doweled white melamine/ white hardboard bottom
- Optional*- baltic birch/ white hardboard bottom

Drawer slide systems

- Standard*- Blum Metabox integral metal drawers slides
- Optional*- Blum 230M ¾ extension epoxy coated- bottom mount
- Optional*- Blum 430E full extension epoxy coated- bottom mount
- Optional*- Accuride 3832 full extension zinc
- Other*- specify_____

Laminate Casework Options Menu

Type of pulls

- Standard*- 96mm wire- satin chrome
- Optional - 96mm wire- stainless steel
- Optional - flush metal black
- Other – specify_____

Types of hinges

- Standard*- Hettich grade 1 three knuckle- nickel
- Optional- Blum concealed 110° opening
- Optional- heavy duty 5 knuckle- satin chrome
- Optional- heavy duty 5 knuckle-stainless steel
- Other – specify_____

Types of catches (only required when 5 knuckle hinges being used)

- Standard*- roller catch
- Optional- magnetic catch

Types of shelf supports

- Standard*- steel pin type
- Optional- plastic locking seismic type
- Optional- surface mounted pilasters/ clips
- Optional- recessed mounted pilasters/ clips
- Other – specify_____

Locking requirements

- Standard*- none
- Optional- 5 disc cam lock- keyed alike (no security panels)
- Optional- 5 disc cam lock- keyed different with security panels
- Other – specify_____

Glass Doors

- Standard*- laminated safety
- Optional- tempered glass

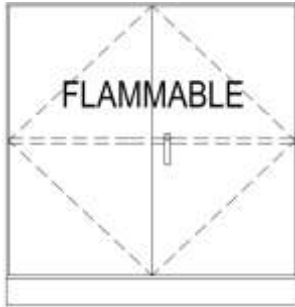
Cabinet Levelers

- Standard*- none
- Optional- required

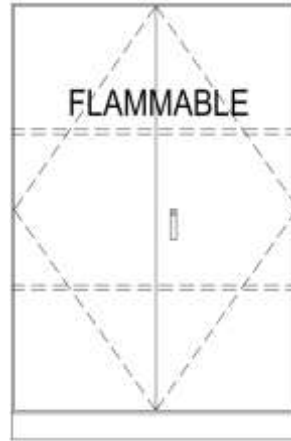
Accessories

- Standard*- none
- Label holders- anochrome
- Number plates (shipped loose for field installation)

Freestanding Flammable and Acid Storage Cabinets



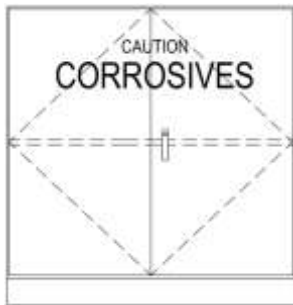
C30 Flammable Storage Cabinet
114 litre (30 gallon) capacity with 1 shelf
(44" w x 45" h x 19" d)



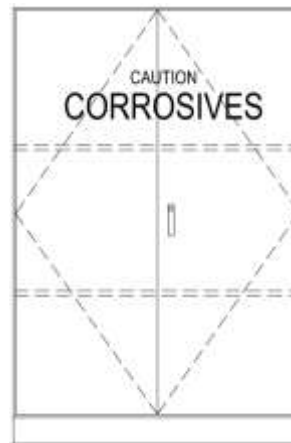
C45 Flammable Storage Cabinet
170 litre (45 gallon) capacity with 2 shelves
(44" w x 66" h x 19" d)

Metal flammable storage cabinets are constructed of 18 gauge steel and features double wall construction. Features a 3 point locking system and 51mm (2") threaded vents on each side. Additional shelves are available.

FM approved- Designed in accordance with NFPA and OSHA standards.



A30 Metal Acid Storage Cabinet
- with 1 shelf
(44" w x 45" h x 19" d)



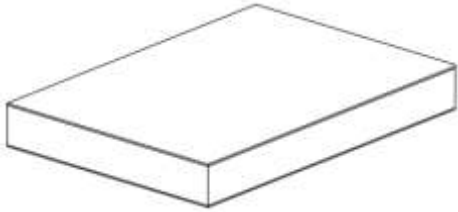
A45 Metal Acid Storage Cabinet
- with 2 adjustable shelves
(44" w x 66" h x 19" d)

Metal acid storage cabinets are constructed of 18 gauge steel, double wall construction with 51mm; features a liquid tight spill well in bottom of cabinet and a 3 point locking system and threaded vents on each side. Additional shelves are available.

FM approved- Designed in accordance with NFPA and OSHA standards.

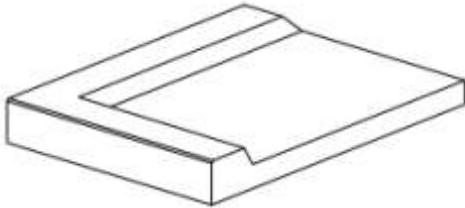
For additional sizes and technical information please contact Provincial Lab Systems Ltd.

Work Surfaces



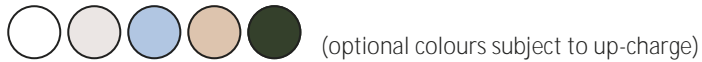
Chemical Resistant Laminate

Application: Areas requiring limited heat and chemical resistance
 Cost: Least expensive material
 Edge Details: Decorative, impact resistant PVC self edge laminate, post-formed edge
 Colour Range: Please contact Provincial Lab Systems for available colour selection.



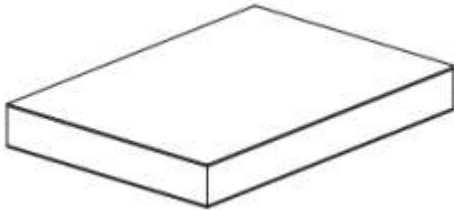
Epoxy Resin (shown with marine edge)

Application: All areas requiring chemical and heat resistance
 Cost: Mid-level
 Edge Detail: Flat, Marine (as shown), Beveled. Solid colour surface
 Thickness: 1" or as specified



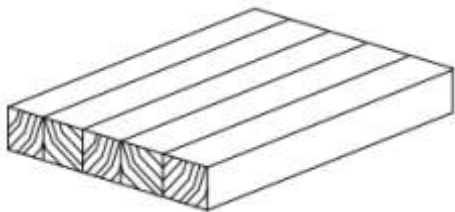
Phenolic Resin

Application: All areas requiring chemical and heat resistance
 Cost: Mid-level
 Edge Detail: Polished black edge
 Thickness: 3/4" - 1" as specified



Stainless Steel

Application: Sterile environments, including surgical rooms and areas subject to radiation, fire and abrasion
 Cost: High
 Types: 304 stainless or 316 stainless steel



Butcher Block

Application: Traditional surface for testing labs and industrial facilities
 Cost: High
 Material: Solid Maple unless otherwise specified
 Finish: Oil or Clear Epoxy

Counter Surface Comparability Chart

Material	Chemical Resistance	Abrasion Resistance	Stain Resistance	Heat Resistance	Impact Resistant	Moisture Resistant	LEED Qualifying
Chemical Resistant Plastic Laminate	G	F	G	F	F	G	A
Epoxy Resin	E	G	G	E	G	E	A
Phenolic Resin	E	G	G	E	G	G	A
Stainless Steel	E	E	G	E	E	E	n/a
Butcher Block	F	E	F	F	E	F	A

E- Excellent

G- Good

F- Fair

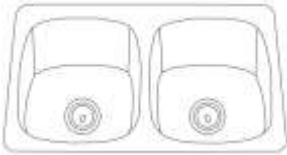
A - Available

Stainless Steel Sinks

T316 Stainless Steel Self Rimming Sinks



S6407/316-1 16" x 14" x 7" w/ crumb cup waste outlet
 S6407/316-3 16" x 14" x 7" w/ 1 1/2" corner waste outlet
 S6810/316-1 18" x 16" x 10" w/ crumb cup waste outlet
 S6810/316-3 18" x 16" x 10" w/ 1 1/2" corner waste outlet
 S6810/316-1 18" x 16" x 10" w/ crumb cup waste outlet
 S6810/316-3 18" x 16" x 10" w/ 1 1/2" corner waste outlet



D6410/316-1 16" x 14" x 10" w/ crumb cup waste outlet
 D6410/316-3 16" x 14" x 10" w/ 1 1/2" corner waste outlet

T316 Stainless Steel Self Rimming Cup Sinks

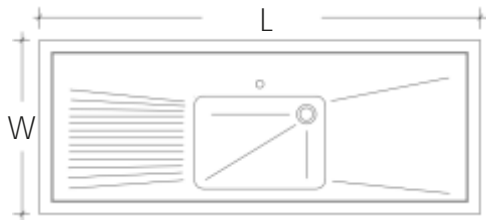


OC6/316 Oval 3" x 6" x 4 1/2"



RC5/316 Round 5" x 4 1/2"
 RC6/316 Round 6" x 4 1/2"

T316 Stainless Steel Sink Tops and Counter Tops



Stainless steel sink tops and countertops are available in custom sizes with seamless integrated sinks, drain boards and back splashes. The sinks can also be manufactured to any size and depth and are available with corner guards and overflows.

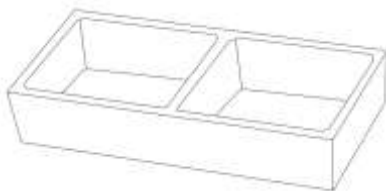
For pricing on a stainless steel sink tops and counters, please contact Provincial Lab Systems.

Epoxy Resin Sinks



Epoxy Resin Drop-in Sink

D15 16" x 12" x 8" w/ 1 1/2" corner waste outlet
 D25 18" x 15" x 8" w/ 1 1/2" corner waste outlet
 D30 18" x 15" x 11" w/ 1 1/2" corner waste outlet
 D55 25" x 15" x 10" w/ 1 1/2" corner waste outlet



Epoxy Resin Double Under-Mount

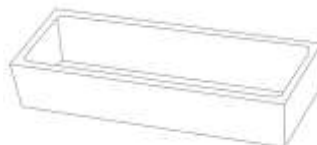
(2) D25 18" x 15" x 8" w/ 1 1/2" corner waste outlet
 (2) D30 18" x 15" x 11" w/ 1 1/2" corner waste outlet
Must use sink supports in cabinet below

Epoxy Resin Cup Sink

CS4R Oval
 3" x 6" x 4"



Epoxy Resin DropIn Troughs



Contact Provincial Lab Systems for available sizes

Valve Selection Guide

Provincial Lab Systems offers a wide selection of valves for use in the laboratory. The selection of a valve for any particular application depends upon many factors, including the working pressure of the service, the degree of metering or control desired. This Valve Selection Guide is presented to assist in selecting the most appropriate valve for any application. All fixtures meet CSA standards and our standard product line is designed and manufactured to meet or exceed industry standards, including *SEFA 7-1996*

“Recommended Practice for Laboratory and Hospital Fixtures.

Provincial Lab Systems cannot be responsible for the results obtained from using any particular valve in any particular application. In particular, reference must be made to applicable plumbing and piping codes, life safety standards and project specifications when selecting valves.

Valve Selection Guide	Standard Needle Valve	Laboratory Ball Valve
Control	Needle Point	Ball Valve
Handle	Four Arm	Lever
Test Pressure/Media	225 PSI/Nit	125 PSI/Air
Maximum Working Pressure	150 PSI	75 PSI
CSA Certified for Natural Gas	Yes	Yes

Compatibility by Service (Symbol):	Standard Needle Valve:	Laboratory Ball Valve :
Air (AIR)	Yes	Yes
Ammonia (NH3)	Yes (St Steel only)	No
Acetylene (C2H2)	Yes (St Steel only; 15 PSI max)	No
Argon (AR)	Yes	Yes
Butane (BUT)	Yes	Yes
Carbon Dioxide (CO2)	Yes	Yes
Carbon Monoxide (CO)	Yes	Yes
Compressed Air (CA)	Yes	Yes
Natural Gas (GAS)	Yes	Yes
Helium (HE)	Yes	Yes
Hydrogen (HYD)	Yes (specially clean)	Yes (specially clean)
Low Vacuum (LO VAC)	Yes	Yes
Methane (CH4)	Yes	Yes
Nitrogen (NIT)	Yes	Yes
Oxygen (OXY)	Yes (specially clean)	Yes (specially clean)
Propane (PRO)	Yes	Yes
Steam (Note 1)	No	No
Vacuum (VAC)	Yes	Yes

Note: 1. Steam service requires a valve with specialized internal construction only

Finishes:

Chrome, white and tan are standard finishes; Polished chrome with clear epoxy (slight upcharge); Satin chrome with clear epoxy (slight upcharge); Satin nickel with clear epoxy (slight upcharge)

Single Water Faucets



L4800F-225WSA Panel/Overhead Carrier Mounted
Compression valve unit with replaceable stainless steel seat , serrated nozzle, four-arm handle with color-coded index disc, forged brass with polished chrome plated finish, 3/8" NPT male inlet



L5100F-225WSA Panel/Overhead Carrier Mounted
Compression valve unit with replaceable stainless steel seat , serrated nozzle, four-arm handle with color-coded index disc, forged brass with polished chrome plated finish, 3/8" NPT male inlet



L614VB Deck Mounted
Compression valve unit with replaceable stainless steel seat , vacuum breaker, serrated nozzle, four-arm handle with color-coded index disc, forged brass with polished chrome plated finish, 3/8" NPT male inlet, convertible rigid/swing gooseneck



L2714VB-WSA Wall Mounted
Compression valve unit with replaceable stainless steel seat , vacuum breaker, serrated nozzle, four-arm handle with color-coded index disc, forged brass with polished chrome plated finish, 3/8" NPT male inlet , convertible rigid/swing gooseneck

Mixing Water Faucets– Deck Mounted



L414VB Deck Mounted
Compression valve unit with replaceable stainless steel seat, vacuum breaker, serrated nozzle, four-arm handle with color-coded index disc, forged brass with polished chrome plated finish, 3/8" NPT male inlet, convertible rigid/swing gooseneck



L410VB Deck Mounted
Compression valve unit with replaceable stainless steel seat , vacuum breaker, removable aerator, four-arm handle with color-coded index disc, forged brass with polished chrome plated finish, 3/8" NPT male inlet, 9" swing spout

Mixing Water Faucets– Panel Mounted



L214VB-WS Panel Mounted

Compression valve unit replaceable stainless steel seat, vacuum breaker, serrated nozzle, four-arm handle with color-coded index disc, forged brass with polished chrome plated finish, 3/8" NPT male inlet with vertical inlets on 3" centers, cold water on bottom, convertible rigid/swing gooseneck



L514VB-WSA Panel Mounted

Compression valve unit with replaceable stainless steel seat, vacuum breaker, serrated nozzle, four-arm handle with color-coded index disc, forged brass with polished chrome plated finish, 3/8" NPT male inlet with horizontal inlets on 8" centers, convertible rigid/swing gooseneck

Foot Operated Water Faucets



L3050 Foot-Operated Single Valve, Floor Mounted

Forged brass with polished chrome plated finish, self-closing renewable unit with stainless steel valve stem. Forged brass pedal mounted on hinged bracket.
Inlet: 1/2" NPT female inlet (back) Outlet: 1/2" NPT female outlet (top)



L3001 Foot-Operated Mixing Valve, floor Mounted



L082VB-WSA Gooseneck, Deck Mounted

(for use with foot-operated valve)

Forged brass with polished chrome plated finish, vacuum breaker, serrated nozzle, 3/8" NPT male inlet, furnished complete with locknut and washer, convertible rigid/swing gooseneck

Note: If tin-lining for use with pure water is required, add suffix "TL".



L074VB-WSA Gooseneck, Panel Mounted

(for use with foot-operated valve)

Forged brass with polished chrome plated finish, vacuum breaker, serrated nozzle, 3/8" NPT male inlet, furnished complete with locknut and washer, convertible rigid/swing gooseneck

Note: If tin-lining for use with pure water is required, add suffix "TL".

Pure Water Faucets



L684 Pure Water Faucet, Tin-Lined Brass, Deck Mounted

For distilled, deionized or reverse osmosis water

All components in contact with water have pure tin coating, body and gooseneck are dipped in liquid tin to coat all interior surfaces, forged brass with polished chrome plated finish, self-contained renewable unit with replaceable stainless steel seat, valve has self-closing control, white nylon four-arm handle with color-coded index disc, **convertible rigid/swing gooseneck, 3/8" IPS male shank with 1/4" NPT male tailpiece, furnished complete with locknut and washer**



L2784WSA Pure Water Faucet, Tin-Lined Brass, Panel Mounted

For distilled, deionized or reverse osmosis water

All components in contact with water have pure tin coating, body and gooseneck are dipped in liquid tin to coat all interior surfaces, forged brass with polished chrome plated finish, self-contained renewable unit with replaceable stainless steel seat, valve has self-closing control, white nylon four-arm handle with color-coded index disc, **convertible rigid/swing gooseneck, 1/2" NPT female inlet. Furnished complete with mounting shank, locknut and washer**



L7833 Pure Water Faucet, Polypropylene-Lined, Deck Mounted

For distilled, deionized or reverse osmosis water.

Faucet has exterior brass casing and interior lining of inert polypropylene, pure water comes in contact only with inert plastic, forged brass with polished chrome plated finish, diaphragm-type valve, brass valve stem and bonnet with inert elastomer diaphragm, valve has manual on/off control, black nylon knurled handle with color-coded index disc, **6" rigid brass riser, with seven serration plastic hose end, 3/8" IPS male shank with 3/8" OD tube connection, furnished with 3/8" OD compression adaptor for inlet**

Note: L7833SC Same as above except with toggle-style handle and self-closing

Pre-Rinse Units



PR411 Deck Mounted

Compression valve units with replaceable stainless steel seats and integral check valves, check valves prevent cross-mixing of hot and cold water self-closing squeeze valve with rubber-bound spray head, insulated handle and locking ring, valve is **mounted on spring loaded 39" stainless steel hose, four-arm handle with color-coded index disc, forged brass with polished chrome plated finish, 1 3/16" male shank with (2) 3/8" OD flexible copper tubes, furnished complete with locknut and washer**

PR611 Same as above except for cold water only

Pre-Rinse Units



PR1711WSA Panel Mounted

Compression valve units with replaceable stainless steel seats and integral check valves, check valves prevent cross-mixing of hot and cold water, self-closing squeeze valve with rubber-bound spray head, insulated handle and locking ring, valve is mounted on spring loaded 3/8" stainless steel hose, four-arm handle with color-coded index disc, forged brass with polished chrome plated finish, 1 3/16" male shank with (2) 3/8" OD flexible copper tubes, furnished complete with locknut and washer

Steam Valve Fixtures



L2892-131WSA Steam Valve Assembly, Deck Mounted

Straight pattern forged brass with polished chrome plated finish, globe valve design with glass-filled TFE valve disc and stem packing, replaceable stainless steel seat, heat-resistant black nylon four-arm handle with color-coded index disc, 3/8" IPS mounting shank (assembled), locknut and washer, 3/8" NPT male inlet, removable angle ten serration hose end

L2892-132AWSA Same as above except with two valves at 90 degrees

L2892-132SWSA Same as above except with two valves at 180 degrees

L2892-158WSA Same as above except with single valve in panel mounted flange

L2892-146WSA Same as above except with two valves in panel mounted wye fitting



L4892F-225WSA Steam Valve Assembly, Panel Mounted

Straight pattern forged brass with polished chrome plated finish, globe valve design with glass-filled TFE valve disc and stem packing, replaceable stainless steel seat, heat-resistant black nylon four-arm handle with color-coded index disc, 3/8" IPS mounting shank (assembled), locknut and washer. 3/8" NPT male inlet, removable angle ten serration hose end



L5190F-225WSA Steam Valve Assembly, Panel Mounted

Angle pattern forged brass with polished chrome plated finish, globe valve design with glass-filled TFE valve disc and stem packing, replaceable stainless steel seat, heat-resistant black nylon four-arm handle with color-coded index disc, 3/8" NPT male inlet, removable angle ten serration hose end

Needle Valve Fixtures



L2880-131WSA Needle Valve Assembly, Deck Mounted

Deck mounted turret base with single outlet with straight pattern forged brass with polished chrome plated finish, floating stainless steel needle and replaceable stainless steel seat, forged brass four-arm handle with color-coded index disc, 3/8" IPS mounting shank (assembled), locknut and washer, 3/8" NPT male inlet, removable ten serration hose end

L2880-132AWSA Same as above except with two valves at 90 degrees

L2880-132SWSA Same as above except with two valves at 180 degrees



L4880F-225WSA Needle Valve Assembly, Panel Mounted

Straight pattern forged brass with polished chrome plated finish, floating stainless steel needle and replaceable stainless steel seat

L2880-141WSA Same as above except with two valves in panel mounted wye fitting



L5180F-225WSA Needle Valve Assembly, Panel Mounted

Angle pattern forged brass with polished chrome plated finish, floating stainless steel needle and replaceable stainless steel seat, forged brass four-arm handle with color-coded index disc, 3/8" IPS mounting shank (assembled), locknut and washer, 3/8" NPT male inlet, removable ten serration hose end

Ball Valve Fixtures



L4200-131WSA Ball Valve Assembly, Deck Mounted

Forged brass with polished chrome plated finish, quarter-turn open/close with chrome plated brass ball and molded TFE seals, chrome plated forged brass lever handle with color-coded index disc, 3/8" IPS mounting shank (assembled), locknut and washer, 3/8" NPT male inlet, removable ten serration hose end

L4200-132AWSA Same as above except with two valves at 90 degrees

L4200-132SWSA Same as above except with two valves at 180 degrees.



L4200-158WSA Ball Valve Assembly, Panel Mounted

Forged brass with polished chrome plated finish, Quarter-turn open/close with chrome plated brass ball and moulded TFE seals, Chrome plated forged brass lever handle with color-coded index disc, 3/8" IPS mounting shank, locknut and washer, Removable ten serration hose end

L4200-141WSA Same as above except with two valves in panel mounted wye fitting

Safety Equipment



EW806 Eyewash, Deck Mounted, 90° Swivel, Right Hand Mounting
Two GS-Plus™ spray heads. Each head has a “flip top” dust cover, internal flow control and filter to remove impurities from the water flow, 1/2" IPS chrome plated brass stay-open ball valve, valve is US-made with chrome plated brass ball and Teflon® seals, unit may be mounted on right side (EW806) or left side (EW806LH) of sink, furnished with locknut and washer for securing unit to countertop, polished chrome plated brass, 1/2" NPT male inlet, ANSI-compliant identification sign



EW810 Eyewash, Recess Deck Mounted, Push-Down Valve
Two GS-Plus™ spray heads. Each head has a “flip top” dust cover, internal flow control and filter to remove impurities from the water flow, 1/2" IPS brass stay-open ball valve mounted below counter and activated by push-down knob, 13" diameter flanged stainless steel bowl for recessed mounting in countertop, furnished with all hardware necessary for installation in counter, 1/2" NPT male inlet & 1 1/4" NPT female outlet, ANSI-compliant identification sign



EW1022 Eyewash/Drench Hose Unit, Deck Mounted
Two GS-Plus™ spray heads mounted side-by-side. Each head has a “flip top” dust cover, internal flow control and filter to remove impurities from the water flow, forged brass squeeze valve activated by stainless steel lever handle, valve has replaceable stainless steel seat for exceptional durability, locking clip engages when handle is depressed, providing “hands free” operation, valve stays open until locking clip is released, 8' reinforced PVC hose with 300 PSI maximum working pressure, deck flange for countertop mounting, flange has handle locator guide to position spray heads and handle facing forward at all times, 3/8" NPT male swivel-type inlet, ANSI-compliant identification sign

Additional Options:

HG Under counter hose guide bracket to prevent hose from tangling or binding

ES643 Emergency Shower, Horizontally Mounted, Plastic Shower Head



Shower head: 10" diameter. Shower head is orange ABS plastic (ES643) or stainless steel (ES643SSH), 1" IPS chrome plated brass stay-open ball valve. Valve is US-made with chrome plated brass ball and Teflon® seals. Furnished with stainless actuating arm and 29" stainless steel pull rod, 1" IPS galvanized steel nipple with orange ABS plastic elbow, (ES643) or galvanized street elbow (ES643SSH), 1" NPT female inlet, ANSI-compliant identification sign

Additional Options:

FC20 Regulates shower flow rate to 20 GPM

SSH Stainless steel shower head

SC Self-closing ball valve. *Note: Emergency showers with self-closing valves do not*

Note: Check with code authority for compliance with local plumbing code.

Electrical Fixtures & Raceways

Standard Finishes for pedestal boxes are as follows:

- Wrinkle black epoxy powder-coated finish (standard).
- Satin (brushed) aluminum finish (suffix "SA").
- Polished (bright) aluminum finish (suffix "PB").

Electrical boxes are UL-listed under standard UL514A, CSA approved, machined for both standard and ground fault receptacles, and are furnished complete with grounding screws, 3/4" IPS mounting shank and locknut, and stainless steel cover plates when receptacles are ordered with boxes.



E100
Single Gang Flush

E100 includes 125V 20A brown receptacle & outlet box

E200
Double Gang Flush

E103GF includes 125V 20A ground fault brown receptacle & outlet box

E107 includes 250V 20A brown receptacle & outlet box

E200 includes 125V 20A brown receptacles & outlet box

E203GF includes 125V 20A ground fault brown receptacles & outlet box

E207 includes 250V 20A brown receptacles & outlet box



E300WS
Single Gang,
Single Face

E333WS includes 125V 20A brown receptacle

E333GF-WS includes 125V 20A ground fault brown receptacle

E337WS includes 250V 20A brown receptacle



E400WS
Single Gang,
Double Face

E433WS includes 125V 20A brown receptacles

E433GF-WS includes 125V 20A ground fault brown receptacles

E437WS includes 250V 20A brown receptacles



E500WS
Double Gang,
Single Face

E533WS includes 125V 20A brown receptacles

E533GF-WS includes 125V 20A ground fault brown receptacles

E537WS includes 250V 20A brown receptacles

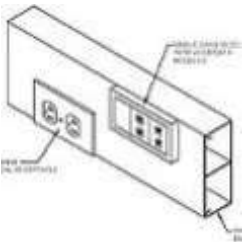


E600WS
Double Gang,
Double Face

E633WS includes 125V 20A brown receptacles

E633GF-WS includes 125V 20A ground fault brown receptacles

E637WS includes 250V 20A brown receptacles



Provincial Lab Systems offers a variety of single and dual channel electrical raceways and accessories

Contact for more information

Fume Hoods

Fume Hood Applications

Laboratory professionals and students across the country, and all over the world, depend on the safety of our hoods. Your protection is our first concern and the fume hood must be designed to be compatible with the type of work that will be performed.

Only specially designed fume hoods should be used for perchloric acid procedures. Other specialized applications may require explosion proof fixtures, special liner materials or fire extinguisher systems.

Never use a fume hood that has not been designed for the type of procedure being performed!

Common Fume Hood Types

Bench Fume Hoods:

Most common hood type used for general chemistry procedures. Specialized versions include ADA Bench Hoods for access by handicapped personnel, Radioisotope, and Perchloric hoods.

Walk-In Hoods:

A floor-to-ceiling fume hood for chromatography, distillation, pilot plant mock-ups, vat drug preparations and other procedures requiring large equipment inside the containment chamber.



At Provincial Lab Systems Systems, our top priority is your safety.

Your new Fume Hood as manufactured, is one of the safest in the industry, and is the result of extensive research and development to ensure the fume hoods are economical and efficient. All hoods have been designed, manufactured, and certified to SEFA 1 standards and independently tested to the ASHRAE 110-1995 methods of testing.

However, the fume hood operator is the single most important safety feature in the laboratory and no matter how safe the fume hood system is designed to be, the operator must follow certain procedures for it to work safely and efficiently.



Product Warranty

Provincial Lab Systems guarantees their fume hood products with a standard 5 year warranty !

Protecting the environment is high on our list of priorities. We are constantly seeking new ways to use less energy, use recycled materials, and to use environmentally sound processes and practices.

Recently, we've introduced LED lighting, Greenstone Epoxy Resin work surfaces utilizing post consumer recycled content, high performance hoods that operate at greater efficiencies, and now the Green Solution Hood.

Green Energy Fume hood

The Green Solution Hood

Unprecedented safety in a hood that uses 96% less energy than standard hoods and has an operating cost 70% lower.

The Green Solution Hood and its patented Neutrodine® filtration system by ErLab® use molecular adsorption to handle fumes from acids, solvents, liquids, and even powders with the use of a HEPA filter accessory, together or individually all under the same hood.

Safety

The Neutrodine® filtration technology has passed the most comprehensive industry tests, performed by Intertek, a leader in product quality certification.

Filtration test—NFX 15-211 & Standard Containment test ASHRAE 110-1995 and EN 14175.

Safety features include stacked double filters, several sensors, alarm and notification system and online remote monitoring software.

Environmental Impact

The Green Solution Hood is a ductless fume hood that is ecologically responsible in several ways.

It uses 96% LESS energy than standard fume hoods. Saving energy saves CO₂ emissions.

Uses absorption. The harmful fumes are adsorbed by the Neutrodine® filtration system, unlike traditional hoods that are vented to disperse the harmful fumes into the atmosphere.

Saturated filters are incinerated in a zero impact CO₂ cycle.

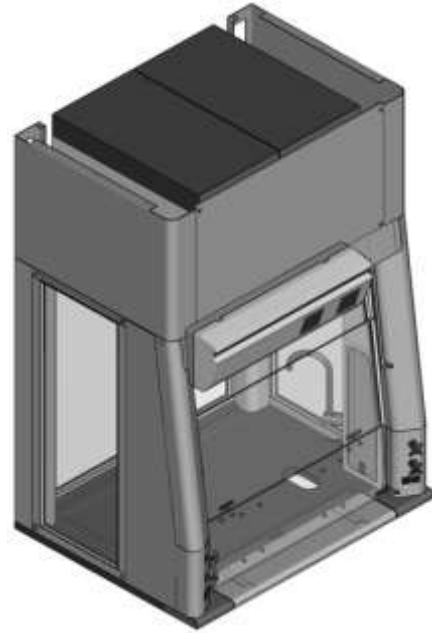
The Green Solution Hood does not require the additional ductwork of a traditional hood, resulting in smaller building designs, lower building material costs, and lower heating and air conditioning costs.

Ductless means flexibility. The Green Solution Hood can be moved and re-installed to accommodate updates and changes in the laboratory design.

Cost

The retention capacity of the Neutrodine® filtration system is 50% greater than that of traditional carbon based filters. This doubles the life of the filters in the Green Solution Hood making it extremely economical in operation costs.

The Green Solution Hood will cut your laboratory fume hood operating costs by 70%. Most of our customers experience ROI within 2 years. Contact us for a cost of operation analysis and ROI calculation.



Part Number	Superstructure			Worktop			Hood Opening	
	W	H	D	W	H	D	W	H
SFH482	48"	71-7/16"	36-7/8"	48"	1-1/4"	30"	38"	30"
SFH602	60"	71-7/16"	36-7/8"	60"	1-1/4"	30"	50"	30"
SFH724	72"	71-7/16"	36-7/8"	72"	1-1/4"	30"	62"	30"
SFH962	96"	71-7/16"	36-7/8"	96"	1-1/4"	30"	86"	30"

100fpm @ 12" open; 60fpm @ 18" open

Green Energy Fume hood (cont'd)

Sensors

Filter Saturation Detection: A dual sensor system, this exclusive and innovative detection includes a sensor for the filtration system and the ambient air quality.

Temperature Sensor: Sensitive to unusual temperature fluctuation, this sensor sets off audible and visible alarms. This sensor is also synchronized with gGuard monitoring software to send a remote alert via network. Temperature sensors are also a dual sensor system.

Sash Position and Airflow Detection: This system of sensors works to automatically adjust the blower speed to ensure a face velocity of 100 fpm based on the height of the sash opening. This system can be monitored and managed by gGuard online software.

User Identification System: An optional personalized RFID card may be used to operate the hood. The Radio Frequency Identification card is programmed with personal information and allows a specified level of access. The three levels of access include: User- full operation of the hood; Administrator- access to recorded data on the hood such as usage and alarm history; and Maintenance- total access level allowing calibration functions and access to other features for service and repairs.

Neutrodine® Filtration Technology by Erlab®

The Green Solution Hood is capable of filtering 98% or more of the chemicals commonly used in 99.9% of laboratories. Most of the remaining 2% of chemicals are either non-toxic or they are chemicals used in less than 0.1% of laboratories.

The Green Solution Hood, a ductless fume hood, is significantly more effective than traditional ductless hoods because of the Neutrodine® filtration system by Erlab®. The Neutrodine® Filtration system is superior in capability and safety to all other ductless fume hoods on the market today.

The Neutrodine® Filtration System is capable of a much broader spectrum of protection than traditional ductless fume hoods containing carbon based filters. The Green Solution Hood handles liquids, solids, acids, bases and solvents individually or together under the same hood.

Dual "Revolving Filter" System

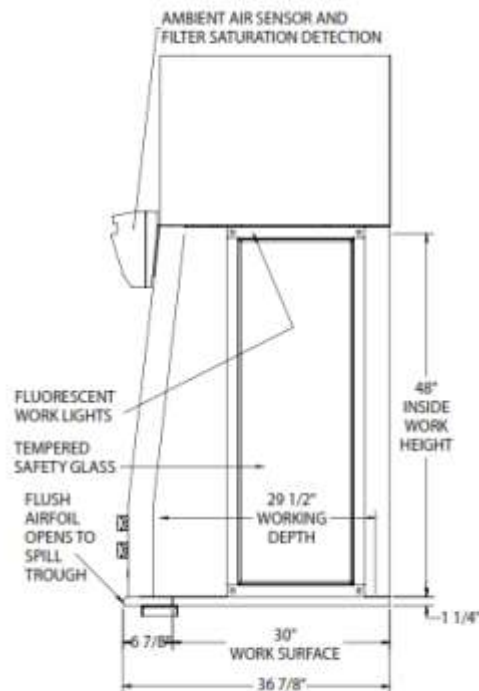
The Green Solution Hood filter system includes two identical filters, stacked with an open space between them that contains a molecular detection sensor. When the main filter reaches saturation, any escaping molecules are detected by the sensor and adsorbed by the second identical filter.

When the main filter is saturated, the back up filter is moved to take its place. The main filter is collected and incinerated, and a brand new filter is installed above it as the new backup filter.

Unprecedented safety in a hood that uses 96% less energy than standard hoods and has an operating cost 70% lower.

gGuard Communication System

Finally, managers and safety officers can get real-time status information, complete control and permanent, consistent monitoring. Every Green Solution Hood comes with a gGuard onboard computer that monitors and controls several aspects of the hood's operation.



High Efficiency Fume hood



The Eliminator 100 HP Series: High Performance Low Velocity Fume Hood *A Green Alternative*

The Eliminator HP hood comes standard with all the same features as other Eliminator models, along with some additional innovations to set this hood apart from its competitors.

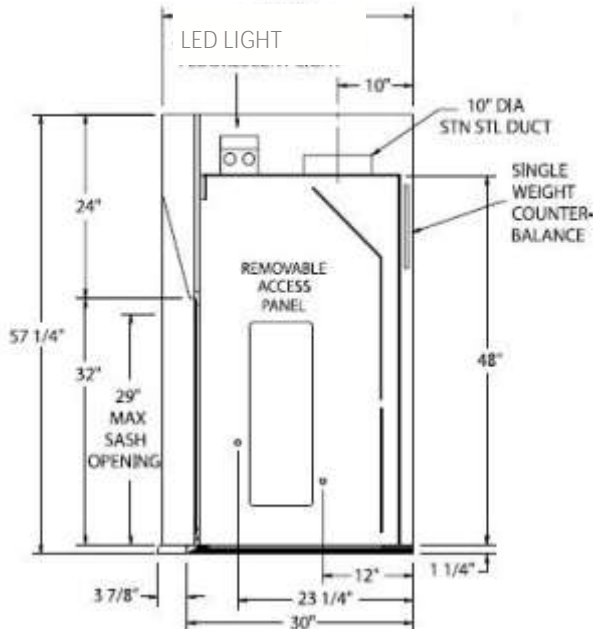
Features of the HP Series include:

40-60% energy savings, accomplished without compromising performance or safety, and high-efficiency L.E.D. lighting with low maintenance costs. The HP model is designed to operate economically while creating a safe work environment without compromising containment. By operating at 60 FPM, air flow across the sash opening results in a 40% savings in fume hood operation costs.

The HP hood was designed to do all this and still fit on a standard-depth countertop and cabinet. This means no disassembly and reassembly during the installation process. The HP hood fits through a standard door opening, making this hood the choice for that retrofit job.

EH-HP STANDARD FEATURES

- Powder Coat Finish
- Full Frame Construction
- Shaft Drive Sash
- U.L. Listed Poly Resin Liner
- LED Lights
- Flush-Mount Airfoil
- Knock Down Capability
- Interior Access to Light
- Full-Length Finger Lift
- Sash Sweep



Part Number	Superstructure			Worktop			Hood Opening		CFM @ 28"*	CFM @ 18"*	SP	Shipping Weight
	W	H	D	W	H	D	W	H				
EH-HP-48	48"	56"	33-1/4"	48"	1-1/4"	30"	38"	28"	469	313	.25	200
EH-HP-60	60"	56"	33-1/4"	60"	1-1/4"	30"	50"	28"	619	413	.34	225
EH-HP-72	72"	56"	33-1/4"	72"	1-1/4"	30"	62"	28"	769	513	.34	270
EH-HP-96	96"	56"	33-1/4"	96"	1-1/4"	30"	86"	28"	1069	713	.34	300

Student Workstation Fume hood



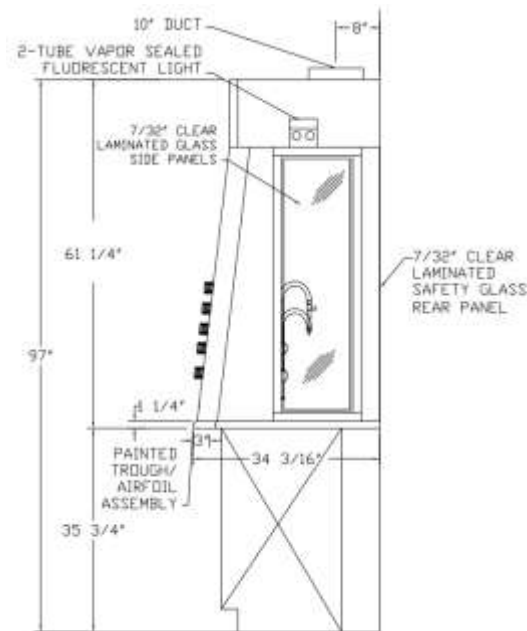
The Eliminator SWS Series:
Solution Work Station
Viewing Everything, U.L. 1805 Classified

The Solution Work Station was designed to allow 360 degree viewing for undergraduate teaching labs. With the absence of counterweights and baffles, the SWS maximizes ambient light throughout the hood. In addition, this hood has the flexibility necessary to allow back-to-back or side-by-side configurations.



EH-SWS STANDARD FEATURES

- Powder Coat Finish
- Full Frame Construction
- Constant Force Sash Counterbalance
- U.L. Listed Poly Resin Liner
- T-8 Fluorescent Light with bulbs
- Flush-Mount Airfoil
- Interior Access to Light
- Full-Length Finger Lift
- Louvered Front for By-Pass
- 10" Round S/S Duct Collar



Part Number	Superstructure			Worktop			Hood Opening		CFM @ 100LFM	SP at Hood**	10" Duct Size
	W	H	D	W	H	D	W	H			
EH-SWS-48	48"	60"	32-3/8"	48"	1-1/4"	29"	45-3/8"	29"	770	.25"	10"
EH-DWS-48	48"	60"	64-3/4"	48"	1-1/4"	58"	45-3/8"	29"	770	.25"	2 – 10"
EH-SWS-60	60"	60"	32-3/8"	60"	1-1/4"	29"	57-3/8"	29"	1000	.33"	10"
EH-DWS-60	60"	60"	64-3/4"	60"	1-1/4"	58"	57-3/8"	29"	1000	.33"	2 – 10"
EH-SWS-72	72"	60"	32-3/8"	72"	1-1/4"	29"	69-3/8"	29"	1250	.5"	10"
EH-DWS-72	72"	60"	64-3/4"	72"	1-1/4"	58"	69-3/8"	29"	1250	.5"	2 – 10"

SWS = Single Sided Work Station

DWS = Double Sided Work Station (order two single sided hoods and face them back-to-back)

*HVAC will have to "wye" double sided hood duct.

LABORATORY FUME HOODS

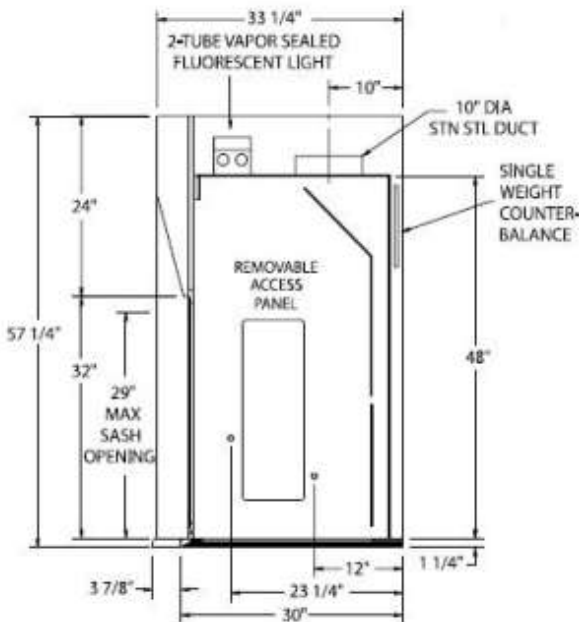
Standard Airfoil Fume hood



The Eliminator 100 Series: Airfoil Fume Hood

Minimized Turbulence, Increased Performance
U.L. 1805 Classified

The EH-100 series airfoil-type fume hood features a 45-degree angle around the fascia and a flush-mount radiused airfoil across the bottom, which results in minimized turbulence and increased performance. Like the exterior of the hood, the airfoil is made from chemical-resistant, powder-coated, 16-gauge cold rolled steel. A stainless steel airfoil is available as an option. Posts are 5" (127 mm) wide. Five standard sizes offer design flexibility, or we'll customize to your specific needs.



EH-100 STANDARD FEATURES

- Powder Coat Finish
- Full Frame Construction
- Shaft Drive Sash
- U.L. Listed Poly Resin Liner
- T-8 Fluorescent Light with bulbs
- Flush-Mount Airfoil
- Knock Down Capability
- Interior Access to Light
- Full-Length Finger Lift

Part Number	Superstructure			Worktop			Hood Opening		CFM @ 29"*	CFM @ 18"*	SP	Shipping Weight
	W	H	D	W	H	D	W	H				
EH-111-36	36"	56"	33-1/4"	36"	1-1/4"	30"	26"	29"	567	354	.25	190
EH-111-48	48"	56"	33-1/4"	48"	1-1/4"	30"	38"	29"	833	521	.25	200
EH-111-60	60"	56"	33-1/4"	60"	1-1/4"	30"	50"	29"	1100	688	.34	225
EH-111-72	72"	56"	33-1/4"	72"	1-1/4"	30"	62"	29"	1367	854	.34	270
EH-111-96	96"	56"	33-1/4"	96"	1-1/4"	30"	86"	29"	1900	1188	.40	300

* Height of open sash; CFM calculated at 100 FPM

Double-Faced Airfoil Fume hood



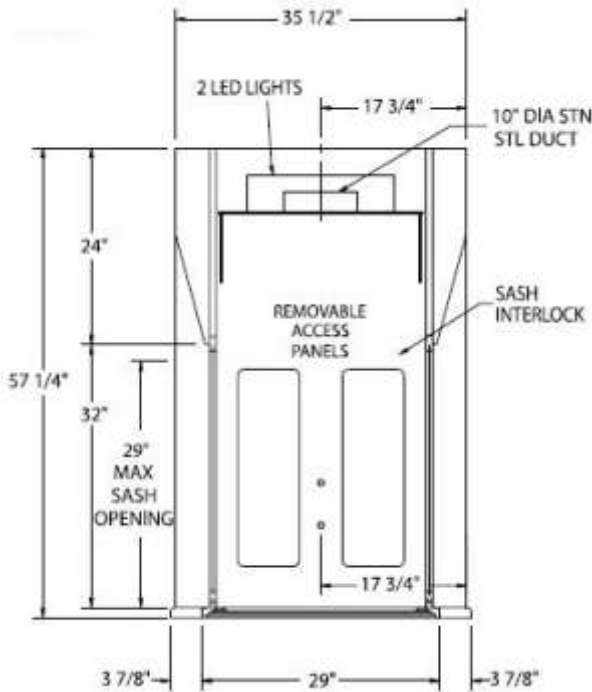
The Eliminator 200 Series:
Double-Faced Fume Hood
Dual Access, U.L. 1805 Classified

The Eliminator 200 series provides the same aerodynamic design features as the EH-100 airfoil hood series, with entrance from two sides. This makes it ideal for use in classroom or prep room settings or whenever demonstration of experiments is desired.

A 45-degree angle around the fascia and a flush-mount radiused airfoil across the bottom provide minimized turbulence and increased performance.

The EH-200 features standard 5" (127 mm) posts to allow for electrical and remote control plumbing services on both sides, and these can be configured to your exact specifications.

Five standard sizes and an array of options make this one of the most flexible fume hoods available anywhere.



EH-200 STANDARD FEATURES

- Powder Coat Finish
- Full Frame Construction
- U.L. Listed Poly Resin Liner
- LED Lights
- Flush-Mount Airfoil
- Knock Down Capability
- Interior Access to Light
- Full-Length Finger Lift
- Louvered Front for By-Pass
- Sash Interlock

Part Number	Superstructure			Worktop			Hood Opening		CFM @ 29"*	CFM @ 18"*	SP	Shipping Weight
	W	H	D	W	H	D	W	H				
EH-211-36	36"	56"	35-1/2"	36"	1-1/4"	29"	26"	29"	567	354	.25	190
EH-211-48	48"	56"	35-1/2"	48"	1-1/4"	29"	38"	29"	833	521	.33	200
EH-211-60	60"	56"	35-1/2"	60"	1-1/4"	29"	50"	29"	1100	688	.34	225
EH-211-72	72"	56"	35-1/2"	72"	1-1/4"	29"	62"	29"	1367	854	.34	270
EH-211-96	96"	56"	35-1/2"	96"	1-1/4"	29"	86"	29"	1900	1188	.40	300

* Height of open sash; CFM calculated at 100 FPM with one sash open

Polypropylene Fume hood and Portable Hoods



Polypropylene Fume Hood

A polypropylene fume hood is an excellent choice in a by-pass fume hood for the reasons there is no exposed metal to rust, their ergonomic design, 100% polypropylene with seam welded metal free construction lasting longer. Air by-pass feature promotes better uniform face velocity during window operations. Other features include:

- sealed interior fluorescent electronic lighting
- counterbalanced sliding lexan view screen with an 18" (457mm) maximum opening to fully closing
- flush Mounted exterior/interior plumbing chase access panels
- polypropylene service valves except natural gas
- removable rear baffle for maintenance
- reinforced 1/2-inch thick polypropylene work surface
- lower work access opening airfoil
- PVC Electrical Junction Box

PH4830	48" x 30"	460CFM @ 0.3" w.g.
PH6030	60" x 30"	620CFM @ 0.4" w.g.
PH7230	72" x 30"	775CFM @ 0.5" w.g.
PH9630	96" x 30"	1075CFM @ 0.8" w.g.

Contact Provincial Lab Systems for your specific requirements and available accessories.

Ventilation Stations



Ventilation stations may be used as light duty fume hoods in science classroom work stations, solvent cleaning work bays, weighing stations or for pathology and cytology. With glass tops and sides and low profiles, they are well suited for educational settings. Ventilation Stations may be ducted to the outside or connected to a portable exhauster (sold separately) for HEPA and/or Carbon Filtered exhaust back into the laboratory.

Features include air foil with openings to enhance airflow and zoned-perforated rear baffle that creates horizontal laminar airflow to maximize containment. Other features include side-entry air foils, built-in top-mounted airflow monitor; low profile design; dry powder, sturdy epoxy-coated aluminum frame and steel rear panel and baffle; 3/16" thick, non-static producing tempered safety glass sides and top for excellent visibility, ambient light and protection; 8" high sash opening; ergonomic 1/4" thick tempered safety glass angled sash that is hinged to pivot up and lock for loading; and two utility ports.

VS3629	36" x 29" x 32" h	60 fpm exhausts 140 CFM at .06" sp
VS4829	48" x 29" x 32" h	60 fpm exhausts 185 CFM at .09" sp
PE1423	14" x 23" x 22.65" h	Portable Exhauster

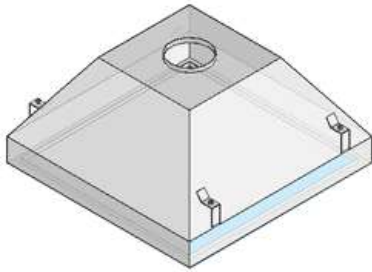
Contact Provincial Lab Systems for your specific requirements and available accessories.

Extractor Arms, Canopies, Autopsy Tables, and Pass Thru



Extractor Arms

Extractor arms provide a flexible fume removal system and come with either a 75mm (3") or 100mm (4") tube diameter. Use the 3" wherever air volumes of up to 100 cfm are required for exhausting fumes. One-handed adjustments make operation easy. Systems are available with white or red polypropylene joints and aluminum or polypropylene arms. Choose from wall or ceiling mounted models. Customize your system with hoods, ceiling columns or wall brackets.



Canopy Hood

Canopy hoods are designed to collect heat, steam, and various fumes over the work surface. The hood is typically mounted over the work surface area and attached to the wall. This model also has two suspended rod brackets welded to the front for support. Canopy hoods are constructed from: T304 stainless steel (SS), or steel with a powder coated corrosive resistant paint (PC).

CH3630	36" x 30"
CH4830	48" x 30"
CH6030	60" x 30"

Contact Provincial Lab Systems for other sizes.



Autopsy Tables

Autopsy Tables are T304 #4 stainless steel, fully welded and polished construction ensuring a high quality finish. Tables come complete with sink, wash down spray, lab faucets, removable perforated trays, adjustable air flow, nylon levelling feet and drop in sink. Options include: T316 stainless steel, power lift, locking swivel casters, and insinkerator.

AT6032	60" x 32" x 66"
--------	-----------------

Contact Provincial Lab Systems for other pathology equipment and models.



Stainless Steel Pass Thru

All type T304 #4 stainless steel construction with solid or glass doors. Doors have lift off hinges and mechanical door interlock. Comes complete with wall mounting hardware and trim kit. Options include: T316 Stainless Steel # 4 finish, electro mechanical interlock, H.E.P.A filter system, nitrogen purged, and custom sizes available.

PT2424	24" x 24" x 16"
--------	-----------------

Contact Provincial Lab Systems for other models and configurations



Pegboards

Available in a variety of materials: Plastic Laminate (PL), Phenolic Resin (PR), Stainless Steel (SS), Epoxy Resin (ER)
Optional accessories: drip trough (DT)
Contact Provincial Lab Systems for other accessories and sizes

PB1830	18" x 30"
PB2430	24" x 30"
PB3030	30" x 30"
PB4830	48" x 30"

ProLab Frosted Series Markerboards



These markerboards feature a unique, specially-coated 1/2" thick high grade acrylic and 1/4" translucent rear panel. Surface is "glass-clear" while the frost panel is added behind to provide light writing surface. Each board is radius and drilled for stainless steel stand-out attachments included with each board.
Contact Provincial Lab Systems for custom sizes.

PM3636	36" x 36"
PM4836	48" x 36"
PM7236	72" x 36"

Balance Tables



Balance tables provide superior stability for highly calibrated equipment. The top and legs are solid 2-1/2" [64mm] thick molded epoxy resin. A galvanized steel lateral support beam adds strength and rigidity. Rubberized vibration reduction pads are included to suppress floor vibrations and increase instrument accuracy and consistency.

BT3524	35" x 24" x 31"h
--------	------------------

Hand Crank and Motorized Adjustable Height Tables



These ergonomic metal tables provide a healthy, safe and productive work environment. These work stations are offered in either a manual crank adjustable height table, or the convenient motorized version. Comes with your choice of work surfaces and options for shelving above.

HC4830	48" x 30" (hand crank)
HC6030	60" x 30" (hand crank)
MC4830	48" x 30" (Motorized)
MC6030	60" x 30" (Motorized)

Contact Provincial Lab Systems for other sizes and available accessories



Lab Carts

Utility carts are designed and built to ensure durability. The carts are made from T304 #4 stainless steel and are fully welded and polished construction. Comes complete with non-marking casters and wheels, with options for T316 stainless steel, locking/swivel casters, and perforated adjustable shelves.

LC3018 30" x 18" x 36"h

Contact Provincial Lab Systems for other models and sizes.



Adjustable Lab Stool with Foot Ring

- Posture correct wide back lab stool with adjustable foot ring
- Powder coated pneumatic lift
- Injection molded black polypropylene plastic seat
- Seat has anti-stat additive and non-slip surface
- Open back provides ventilation and strength
- Fiberglass reinforced cast nylon casters

LS2195

Contact Provincial Lab Systems for other models.



Bench Supports

Bench supports are used to support plumbing and electrical lines along with the laboratory work surface above. Supports consist of a galvanized vertical channel strut and "U" brackets at wall conditions, and two vertical channel struts at islands as shown in diagram left. Pipe and electrical conduit clamps are not included.

BS0736 Wall Conditions
BS1436 Island Conditions

Contact Provincial Lab Systems for other models and configurations.

Gas Cylinder Supports



Cylinder holders secure cylinders to a wall or to the Side of a work bench. Edges are protected with steel reinforced vinyl to help maintain your cylinders and provide extra grip.

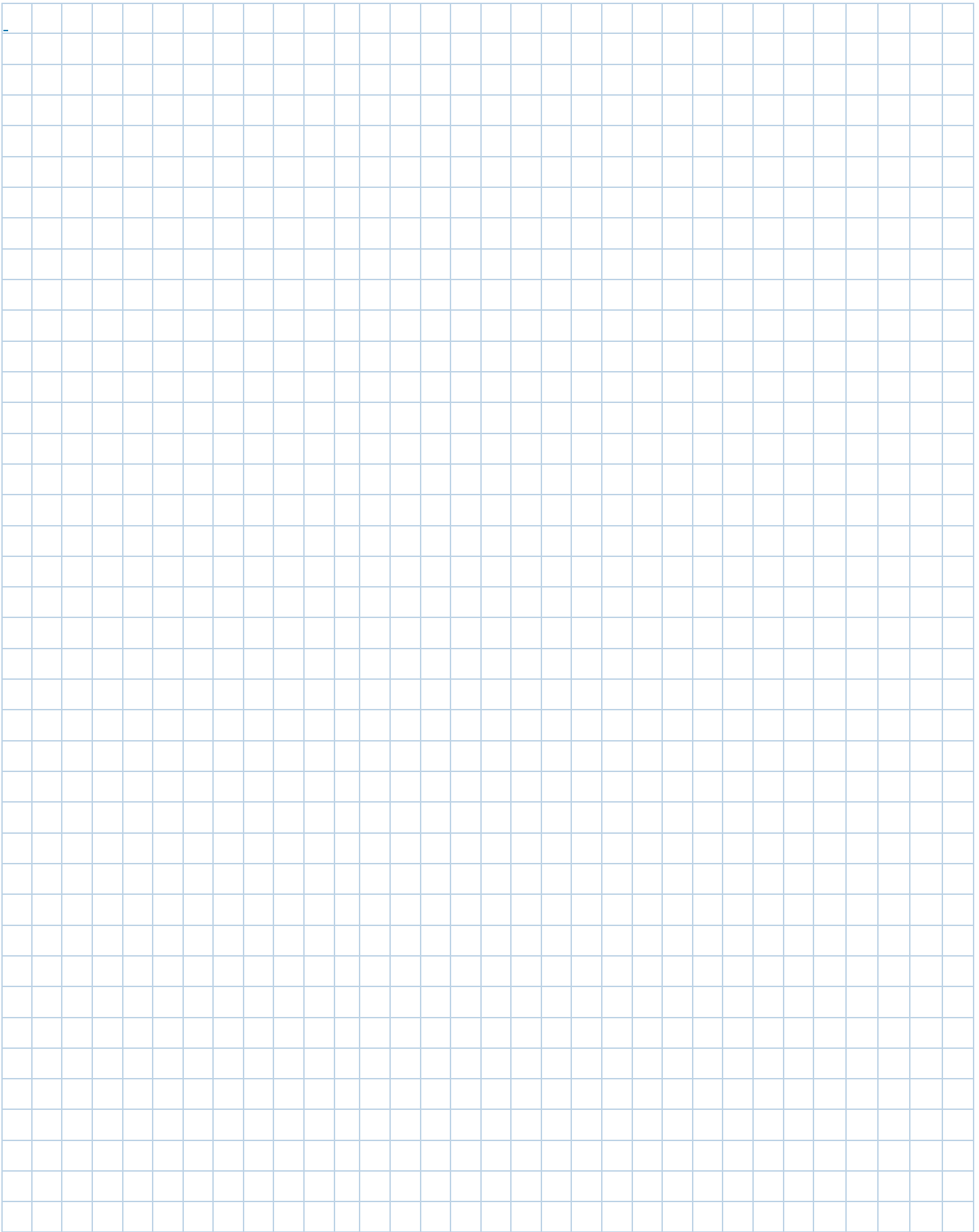


Storage racks secure from 2 to 6 full size cylinders (up to 10" dia) per rack. These racks are constructed of welded steel and are finished in a baked polyurethane finish, and come with double restraints.

GS0001 Single Wall Cylinder Holder
SG0006 6 Cylinder Storage Racks

Contact Provincial Lab Systems for other models and configurations.







The mark of responsible forestry

Provincial Lab Systems Limited

23 Gloster Court
Burnside Industrial Park
Dartmouth, NS B3B 1X9
Tel: 902 468-3034
Toll Free: 1 866 241-5877
Fax: 902 468-3263

www.provinciallabsystems.com



* All products are available as FSC® certified



ARCHITECTURAL WOODWORK
MANUFACTURERS ASSOCIATION
OF CANADA

